

Historic, Archive Document

Do not assume content reflects current scientific knowledge, policies, or practices.

62.73

1915

DUTCH BULBS AND PLANTS DIRECT FROM HOLLAND



Wakru Quality Bulbs

have proven their superiority
for five seasons in America and
for a quarter century abroad

Wakru Seed and Bulb Company

200 WALNUT PLACE, PHILADELPHIA

Sole Distributors of "Wakru Quality" Dutch Bulbs

Grown by Gt. van Waveren & Kruijff, Sassenheim, Holland

Dutch Bulbs and Plants Direct from Holland



*This is our
Fifth Annual
Catalog*

Before the first catalog selling Wakru Bulbs direct to the American Garden Lover, Gt. van Waveren & Kruijff had for 44 years been known as leading growers of best quality bulbs. Next year the firm celebrates its fiftieth anniversary.

*Add 3 Months
to your
Garden*

Before the trees open their leaves in spring, your garden can be brightened only by crocus, tulips, hyacinths, daffodils, etc.—planted in fall.

*Order Now
to get
Better Bulbs*

To get the best bulbs, in time for planting before frost, **order now!** This assures greater satisfaction, because every bulb you get by our direct-from-Holland method, is the finest selection from the best bulb-fields in Holland, packed there and shipped to your home in the original package. We list no experiments—all varieties proved by our testing grounds, both in Holland and in America.

*True to
Name and
Color*

Every re-packing lessens the chance of getting bulbs true to name and color. We eliminate all re-packing by direct shipment in original packages. We assist you in selecting proper combinations for plantings. Our American manager is a practical Hollander, whose whole life has been spent in raising bulbs.

*Grown
Wherever
Tested*

Our records show that wherever test orders for Wakru Bulbs have been secured, the next season brought us largely increased orders. Letters from all over America prove this—a few extracts within.

Do not delay. Make up your test order today. Judge us by the result in your own garden.

(All orders accepted with privilege of returning money if war in Europe prevents shipment.)

WAKRU SEED AND BULB CO.

200 Walnut Place,

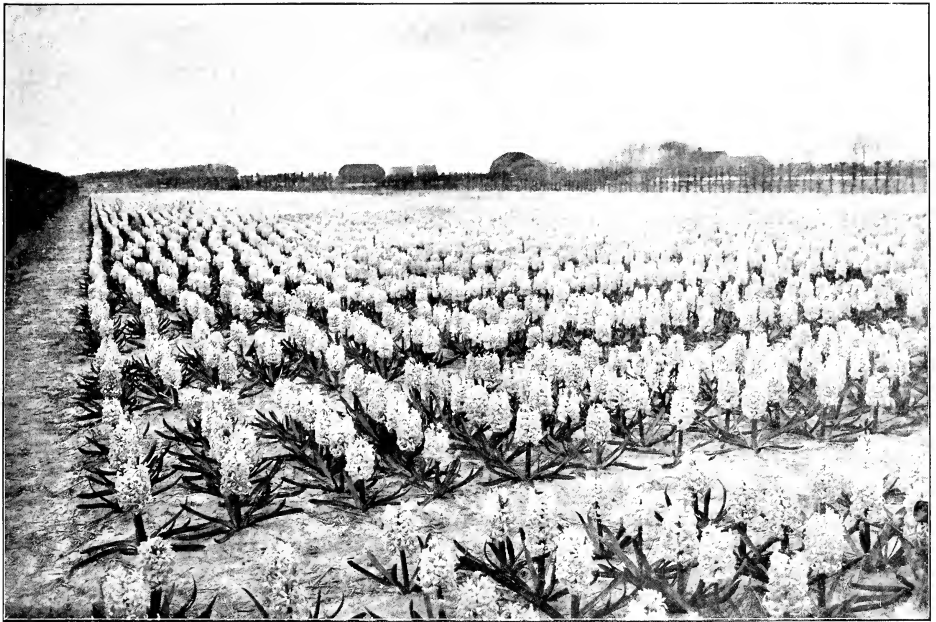
Philadelphia, Pa., U. S. A.

Other Branches: Moscow, Russia; Leipsic, Germany; Buenos Ayres,
Argentine Republic; London, England; Gutenberg, Sweden.

Note the new, reduced prices in this catalog.

100 prices apply down to 25, of any one variety;

1000 prices down to 250



A Section of our Fields in Holland.—Ilyacinths above—Tulips below.



“Wakru Bulbs—the Sign of Quality.”

How to grow Bulbs Outdoors

GARDEN BULBS. A garden may be small or large, yet can always be made to look attractive in the spring with Dutch bulbs when no other flowers have yet made their appearance. The trees will just have begun to show a sprinkle of the tenderest green and the lawn will have assumed a more lively tint when the balmy air already is fragrant with the perfumes of the Dutch flowers.

CROCUS. These may be scattered all over the lawn. They will stand a lot of rough handling and yet show up cheerfully in the early spring. Plant them a couple of inches deep, single or in little groups.

SNOWDROPS may be treated in the same way and certainly repay for the little money and trouble bestowed on them.

HYACINTHS. A splendid display of these typical Dutch bulbs can be made by putting them in beds. Pick out the location for your bed which can be made oblong, round, or square or any shape, according to taste. An oval bed of about 11½ feet by 7½ feet will require about 300 bulbs, while 100 bulbs make an excellent showing in an oblonged bed 2½ by 7 feet. Plant them six inches deep and six inches apart. It will be well to pay attention to the various color combination we are giving under the heading "first size Hyacinths." We might say that the second size as well as Bedding suit the purpose of planting outdoors just as well as the first size and will not run into such a high cost.

TULIPS are also ideal for bedding purpose in such the same manner as the Hyacinths. They should be planted about four inches deep and four inches apart. It is, however, very important to put the right kinds and shades in one bed, as all varieties do not flower at the same time and height. Our little guide will help you to pick out the right varieties (see Tulips).

NARCISSUS. While Hyacinths and Tulips like to have plenty of Sunshine, Narcissus are well contented with shady places. Along hedges, and around and between evergreen they show up fine. They are not very particular as to the depth at which they are planted.

The Three Cardinal Points in Planting Bulbs are these:

First,—as early as permissible in October—to give the bulbs ample chance to make roots before winter comes.

Second, to plant at the right depth, as noted hereafter under the various classes; it is particularly desirable that formal beds should be planted at an even depth.

Third, to provide good drainage if your soil is clayey in character. Bulbs can grow in any average good soil, and in shady places, but like most other flowering plants they benefit by good soil and sun (the latter particularly in the case of Tulips and Hyacinths).

Remember if you are planting bulbs in beds that have contained flowering plants during the summer, that the soil will need enriching, if you desire a profusion of large blooms.

The ideal treatment for a bulb bed, for the planting of tulips, for instance, is to dig out the top soil to a depth of five inches, an inch deeper than the bottom of the bulb is supposed to come. Take well rotted manure and spade it, along with sand if the soil below is clayey, till you have an underlying layer of nearly a foot in depth which is rich and open in texture, so that the bulbs can make a good root growth and find plenty of food when the time comes to send up their flower spikes in spring.

Level off the top of this layer, or if the bed when completed is to be crowned, crown this surface so that all bulbs may be planted at an even depth. Spread practically an inch of sand above this layer; or place it directly below each bulb; set bulbs with flat (or root face) down; then fill in the top soil and press lightly—this little extra care will insure the roots taking hold so much more easily, will provide ample drainage in case there should be a heavy rain shortly after planting, and thus prevent rotting of the bulbs.

Collections for Outdoors. All First Sized Bulbs

Bulbs will bloom from February to June, as:

| | | | |
|-----------------|----------|--------------------|-----------|
| Snowdrops | February | Tulips | April-May |
| Crocus | March | Narcissus | April-May |
| Hyacinths | April | Spanish Iris | June |

G at \$7.50.

- E at \$2.50.**
- 24 Hyacinths, red, rose, white and blue separate.
 - 24 Single Tulips, red, rose, white and yellow separate.
 - 50 Crocus, white, yellow, blue and striped separate.
 - 24 Single Narcissus, white and yellow.
 - 24 Spanish Iris, yellow, white, light and dark blue.
 - 12 Snowdrops (Galanthus Nivalis).

- 72 Hyacinths, red, rose, white and blue separate.
- 72 Single Tulips, red, rose, white and yellow separate.
- 150 Crocus, white, yellow, blue and striped separate.
- 72 Single Narcissus, white and yellow separate.
- 24 Double Narcissus, white and yellow separate.
- 72 Spanish Iris, yellow, white, light and dark blue.
- 36 Snowdrops (Galanthus Nivalis).

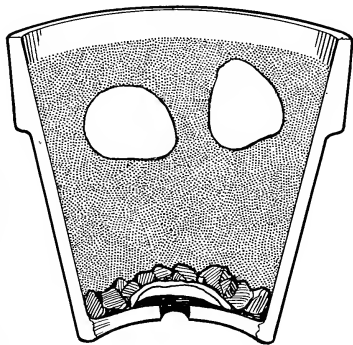
H at \$10.00.

- F at \$5.00.**
- 48 Hyacinths, red, rose, white and blue separate.
 - 48 Single Tulips, red, rose, white and yellow separate.
 - 100 Crocus, white, yellow, blue and striped separate.
 - 48 Single Narcissus, white and yellow.
 - 12 Double Narcissus, white.
 - 48 Spanish Iris, yellow, white, light and dark blue separate.
 - 24 Snowdrops (Galanthus Nivalis).

- 100 Hyacinths, red, rose, white and blue separate.
- 100 Single Tulips, red, rose, white and yellow separate.
- 25 Darwin Tulips, finest mixture.
- 200 Crocus, white, yellow, blue and striped separate.
- 100 Single Narcissus, white and yellow.
- 25 Double Narcissus, white and yellow.
- 100 Spanish Iris, yellow, white, light and dark blue separate.
- 50 Snowdrops (Galanthus Nivalis).

Grow "Wakru Bulbs" and set the pace for your neighborhood.

INDOOR BLOOMING BULBS FOR FORCING



In potting bulbs for indoor blooming, be careful not to plant bulbs too deep. The soil should not come within a half-inch of the top of the pot and the top of the Narcissus bulbs should be up to the surface; the Tulips, not over an inch below; Hyacinths or Crocus, not over a half-inch below.

The soil should be light and rich, three parts loam, one part leaf mould and one part sand is a good combination; the leaf mould serving the purpose of holding the moisture.

A six-inch pot should not contain more than five Tulips, or two Narcissus, or two Hyacinths, or six Crocus. An eight-inch

pan will hold ten Tulips, or eight Hyacinths, or eight Narcissus, or twelve Crocus.

If bulbs are planted in pots, use a piece of a broken pot as an arch over the outlet hole and put in stones to hold this in position and allow drainage without washing away the soil, then on top of the inch of drainage material add coarse, open soil, with the finer soil described above, both above and below the bulbs, as shown in cut.

The bulbs having been potted, they are placed in the cold and dark for a period of a month and a half to three months, being watered only every ten days to prevent the soil from drying up.

It is much simpler if you have garden space to do it, to dig a trench a foot and a half deep, fill in about six inches with ashes, and place the potted bulbs on this layer. Then water well and cover with soil or coal ashes. Unless the season is unusually dry the bulbs will need no further attention till it is time to bring them in. Remember that ample root development is the important point in forcing bulbs. Till the removal of one of the pots from this trench shows that the roots have developed to such an extent that they can be seen through the drainage hole, it is not wise to bring them in. At this time the leaves will be developed to the point of spreading apart so that the bud can easily push up and out.

Assuming that the bulbs are well rooted, the next point is to be sure that they are not kept in too warm a temperature. An average temperature of 55 degrees is plenty high enough. At no time, especially while the bulb is flowering, should the temperature exceed 60 degrees, if you desire best results. Over three-fourths of the failures in forcing bulbs result from too high a temperature; therefore, beware.

Too much water before rooting and too little water after are the prime causes of failures in raising bulbs. Water plentifully once you have them indoors—remember that the house is dry and warm; that air, light and water are the cheapest things in the world and the most essential to success in indoor bulb culture.

If blooms are being borne on too short flower stems and you know that the root growth is ripe, put an open paper cone about a foot high and a couple of inches wide at the top, over the top of the bulb. The stem will draw up in the desire to reach the light. This treatment is particularly applicable to Hyacinths.

WATER CULTURE

What better winter decoration for the home is there than the fragrant Paperwhite Narcissus, the Dutch Hyacinths, Daffodils and Crocuses?

Any of these can be easily raised in water, in a flat jardiniere which has been partially filled with sand or pebbles. Stones between the bulbs will hold them firmly in place, assuring erect flower spikes.

Hyacinths grow beautifully in glasses specially made for this purpose and obtainable in most flower shops. The Tyne kind is the most preferable. Be careful not to let the bottom of the bulb touch the surface of the water. There should be about the thickness of a nickel between. Place the glass in a dark cupboard or closet and wait till the roots crawl over the bottom of the glass. If the water should become foul, let it run out, but never remove the bulb from the glass. Clean the

root by shaking the glass gently after filling again and put in fresh water after the dirt is out. Be careful not to break the roots.

It is well to fill the glasses with soft rain water, and to add a little charcoal from the start, using plant food in the water around blooming time to increase the size of the flowers and the strength of the stem.

A dozen or more Crocuses in a flat bowl make an excellent display, but to assure bloom keep these in an unheated room, if possible.

Remember in growing bulbs in water that it is just as essential to get good roots before exposing to the light, as in the case of indoor forcing in soil. Unless there is a good root growth you are almost sure to be disappointed with the results.

Collections for Indoors. All First Sized Bulbs

A at \$2.50.

- 6 Hyacinths in six named sorts for pots or glasses.
- 6 Hyacinths, early Roman, pure white.
- 12 Single Tulips in four named sorts.
- 6 Narcissus, Paperwhite, early flowering, very easily grown.
- 12 Narcissus, single, in four named sorts.
- 12 Crocus in two colors, can be easily grown on a saucer with water. Keep in a dark place for several weeks till the saucer is well filled with roots. Then bring to the light, but do not place in too warm a spot. Keep saucer well filled with water all the time. If fungus forms, remove by holding saucer under the water tap without removing the bulbs.

B at \$5.00.

- 12 Hyacinths in twelve named sorts for pots or glasses.
- 12 Hyacinths, early Roman, pure white.
- 24 Single Tulips in eight named sorts.
- 6 Double Tulips in two named sorts.
- 12 Narcissus, Paperwhite, early flowering.
- 24 Narcissus, single, in six named sorts.
- 24 Crocus in four named sorts.

C at \$7.50.

- 18 Hyacinths in eighteen named sorts for pots or glasses.
- 18 Hyacinths, early Roman, pure white.
- 36 Single Tulips in twelve named sorts.
- 9 Double Tulips in three named sorts.
- 18 Narcissus, Paperwhite, early flowering.
- 36 Crocus in six named sorts.
- 6 Scilla Siberica, blue. } grow in soil, but do not
- 6 Blue Grape Hyacinths. } put in warm place.

D at \$10.00.

- 24 Hyacinths in twenty-four named sorts for pots or glasses.
- 24 Hyacinths, early Roman, pure white.
- 12 Hyacinths, miniature, in four named sorts.
- 48 Single Tulips in sixteen named sorts.
- 12 Double Tulips in four named sorts.
- 24 Narcissus, Paperwhite, early flowering.
- 36 Single Narcissus in six named sorts.
- 12 Double Narcissus in four named sorts.
- 48 Crocus in eight named sorts.
- 12 Scilla Siberica, blue. } grow in soil, but do not
- 12 Blue Grape Hyacinths. } put in warm place.
- 12 White Grape Hyacinths.

"Grown in the richest soil in Holland."

HYACINTHS.

It has always been admitted that Hyacinths—because of their large heads of fragrant flowers, held at uniform height on substantial stems—were ideal for the formal spring bulb bed.

But the flower lover who uses them only for this purpose—who fails to thoroughly intersperse them in the front of the perennial and annual borders and beds, is losing sight of an opportunity to beautify such portions of his ground, at a season when bloom is otherwise sadly lacking.

Hyacinths are also one of the bets plants that can be relied upon to brighten the home during the months when nothing is in bloom outside. They force easily—if you tried them unsuccessfully it is probable that we may give you some hints which would obtain you better results. As a guide to best results we state below those that have given greatest satisfaction for forcing.

Plant six inches deep (to bottom of bulb) and six inches apart in beds.

MIXED HYACINTHS.

| | | |
|-------------|--------|--------|
| | Doz. | 100. |
| Red | \$0.45 | \$3.00 |
| White | .50 | 3.25 |
| Blue | .50 | 3.25 |

BEDDING HYACINTHS.

Chiefly for Outside Planting.

Although we reserve the right to ourselves to send out Bedding Hyacinths after our own Selection, yet we are willing to accommodate our customers as far as possible when they want us to send the Bedding Hyacinths with names attached. This should be mentioned on the order sheet.

| | | |
|--------------------------------|--------|--------|
| | Doz. | 100. |
| Single Red | \$0.70 | \$4.50 |
| Rose and Pink | .60 | 4.00 |
| White | .70 | 4.50 |
| Blue | .75 | 5.00 |
| Light and Porcelain Blue | .75 | 5.00 |
| Yellow | .80 | 5.50 |
| Double Red | .80 | 5.50 |
| Rose | .80 | 5.50 |
| White | .80 | 5.50 |
| Blue | .85 | 6.00 |
| Light and Porcelain | .85 | 6.00 |
| Yellow | .85 | 6.00 |

MINIATURE (Dutch Roman) HYACINTHS.

These bulbs, if planted at the same time as Romans, or as soon as they are at hand, may be had in bloom in January, if grown inside. Grown outside they give fine results. By planting 8 to 10 inches deep the blooms last longer.

SINGLE DARK RED.

| | | |
|--|--------|--------|
| | Doz. | 100. |
| Amy | \$0.35 | \$2.25 |
| Garibaldi, early, for forcing | .35 | 2.25 |
| General Pelissier, early, fine for forcing | .35 | 2.10 |
| Robert Steyger | .35 | 2.25 |
| Roi des Belges | .35 | 2.10 |

SINGLE ROSE AND PINK.

| | | |
|--------------------------------------|-----|------|
| Baron van Thuyll, early | .35 | 2.10 |
| Gertrude, dark rose, big spike | .30 | 1.85 |

| | | |
|--------------------------------------|-----|------|
| Gigantea, pale rose, big spike | .35 | 2.25 |
| Moreno, nice rose spike | .30 | 2.00 |
| Rosea Maxima, nice spike | .30 | 1.75 |

SINGLE WHITE AND BLUSH.

| | | |
|--|--------|--------|
| Albertine, very early forcer | Doz. | 100. |
| Baron van Thuyll, nice compact spike | \$0.35 | \$2.50 |
| Grandeur a Merveille, blush | .40 | 2.75 |
| La Grandesse, pure white | .45 | 3.00 |
| L'Innocence, pure white | .45 | 3.00 |
| Madame van der Hoop, compact spike | .40 | 2.75 |
| Paix de l'Europe, pure white | .40 | 2.50 |
| Queen Victoria, pure white | .40 | 2.50 |

SINGLE LIGHT BLUE.

| | | |
|--|-----|------|
| Czar Peter, very beautiful | .40 | 2.75 |
| Grand Lilas, fine for cutting | .40 | 2.75 |
| Grand Maitre, large spike | .40 | 2.75 |
| Johan, one of the best light blues | .40 | 2.50 |
| La Peyrouse, sky blue | .40 | 2.50 |
| Regulus, big spikes | .40 | 2.50 |

SINGLE DARK BLUE.

| | | |
|--|-----|------|
| Baron van Thuyll, very early, dark | .45 | 3.00 |
| King of the Blues, good spike | .45 | 3.00 |
| Marie, good deep blue | .45 | 3.00 |
| William I, dark | .50 | 3.25 |
| William III, dark | .50 | 3.25 |

SINGLE YELLOW.

| | | |
|--|-----|------|
| Alida Jacoba | .50 | 3.25 |
| Ida | .50 | 3.25 |
| King of the Yellows, the best yellow | .50 | 3.50 |

MINIATURE HYACINTHS (Dutch Roman). OUR SELECTION.

| | | |
|--------------------------------------|--------|--------|
| | Doz. | 100. |
| Single, named varieties, red | \$0.30 | \$2.00 |
| " " " rose and pink | .30 | 1.75 |
| " " " pure white | .40 | 2.75 |
| " " " creamy white and blush | .30 | 2.00 |
| " " " light and porcelain blue | .40 | 2.50 |
| " " " dark blue | .45 | 3.00 |
| " mixed varieties, all colors | .30 | 2.25 |

SECOND SIZED HYACINTHS FOR FORCING.

Although as a rule first sized Hyacinths are superior to second sized ones when it comes to forcing, yet these 2d sized Hyacinths will make a very nice display in beds or even when planted in pots. We feel convinced that you will be satisfied with them.

Six at a dozen price; 25 at hundred price.

SINGLE DARK RED.

| | | |
|---------------------------------------|--------|--------|
| | Doz. | 100. |
| Amy | \$1.00 | \$7.00 |
| Garibaldi, early forcer | 1.05 | 7.50 |
| General Pelissier, early forcer | 1.05 | 7.50 |
| Robert Steyger, crimson | .90 | 6.50 |
| Roi des Belges, crimson | .85 | 6.25 |

Bulbs so satisfactory are preparing another list.—Lockport, N. Y.

Our bulbs ordered from you last year were so satisfactory that we have prepared a list for this fall. C. W. P., 5-20-13.

Bulbs very fine.—Oley, Pa.

Received Bulbs—they are all very fine and I am well pleased. H. D., 11-4-12.

Every test order has proven our superiority.



HYACINTH GRAND MAITRE.

SINGLE ROSE AND PINK.

| | Doz. | 100. |
|---|--------|--------|
| Baron van Thuyll, rose | \$1.10 | \$8.00 |
| Cardinal Wiseman, late, big spike | 1.10 | 8.00 |
| Charles Dickens, pink, very big spike | 1.15 | 8.50 |
| Gertrude, dark rose, very nice | .80 | 5.50 |
| Gigantea, pale rose | .80 | 5.50 |
| Grand Vainqueur, rose | .75 | 5.00 |
| Lord Macaulay, rose | .90 | 6.50 |
| Maria Cornelia, pink, very early | .85 | 6.00 |
| Moreno, deep pink, big spike | .90 | 6.50 |
| Rosea Maxima, rose | .85 | 6.00 |

SINGLE WHITE AND BLUSH.

| | | |
|---|------|------|
| Albertine, elegant spike, early, pure white | .80 | 5.50 |
| Alba Superbissima, pure white | .90 | 6.50 |
| Baroness van Thuyll, pure white, compact spike | 1.00 | 7.00 |
| Blanchard, big spike, very early, pure white | .85 | 6.00 |
| Grande Vedette, pure white | .80 | 5.50 |
| Grandeur a Merveille, bluish white, elegant spike | .80 | 5.50 |

| | | |
|---|------|-------|
| Grande Blanche, compact spike, big bells | Doz. | 100. |
| La Franchise, creamy-white | .70 | 4.50 |
| La Grandesse, finest pure white | .75 | 5.00 |
| L'Innocence, pure white, fine and early | 1.30 | 10.00 |
| Madame van der Hoop, compact spike, big bells | 1.00 | 7.00 |
| | .90 | 6.50 |

SINGLE LIGHT BLUE.

| | | |
|--|------|------|
| Czar Peter, very beautiful, porcelain blue | 1.25 | 9.50 |
| Grand Lilas, fine for cutting | 1.25 | 9.50 |
| Johan, one of the best light blue | .80 | 5.50 |
| La Peyrouse, sky-blue | .85 | 6.00 |
| Lord Derby, very showy | 1.25 | 9.50 |
| Queen of the Blues, fine spike | 1.15 | 8.50 |
| Regulus, big spike | .90 | 6.50 |

SINGLE BLUE AND DARK BLUE.

| | | |
|---|------|------|
| Baron van Thuyll, dark | 1.25 | 9.50 |
| Captain Boyton, big spike | 1.25 | 9.50 |
| Grand Maitre, big spike, big bulb | 1.05 | 7.50 |
| King of the Blues, dark, good spike | 1.25 | 9.50 |
| Leopold II, excellent for pots | 1.10 | 8.00 |
| Marie, good deep blue | 1.05 | 7.50 |
| William I, dark, early | 1.05 | 7.50 |
| William III, dark, good spike | 1.10 | 8.00 |

SINGLE YELLOW.

| | | |
|---|------|------|
| Alida Jacoba, pure yellow | 1.05 | 7.50 |
| Hermann, orange yellow | 1.10 | 8.00 |
| Ida, big spike, one of the finest yellows | 1.15 | 8.50 |
| King of the Yellows, extra big spike | 1.10 | 8.00 |
| Sonora, deep yellow | 1.10 | 8.00 |
| Yellow Hammer, golden yellow | 1.25 | 9.50 |

SINGLE MAUVE AND PURPLE.

| | | |
|---------------------------------------|------|------|
| Haydn, bluish violet | 1.15 | 8.50 |
| Lord Balfour | 1.00 | 7.00 |
| Lord Mayo | 1.05 | 7.50 |
| Sid Edwin Landseer, dark violet | .90 | 6.50 |
| Sir William Mansfield, purple | .90 | 6.50 |

DOUBLE RED, LIGHT RED AND ROSE.

| | | |
|-----------------------------------|------|------|
| Bouquet Tendre, dark red | 1.05 | 7.75 |
| Czar Nicolas, pink | 1.10 | 8.00 |
| Grootvorst, pink | 1.05 | 7.50 |
| Lord Wellington, rose | 1.05 | 7.50 |
| Noble par Merite, deep rose | 1.05 | 7.50 |
| Prince of Orange, rose | 1.10 | 8.00 |

DOUBLE WHITE AND BLUSH WHITE.

| | | |
|--------------------------------------|------|------|
| Bouquet Royal, pure white | 1.05 | 7.50 |
| Isabella, bluish | 1.05 | 7.50 |
| La Deesse, pure white | 1.10 | 8.00 |
| La Tour d'Auvergne, pure white | 1.00 | 7.00 |
| La Virginité, rosy-white | 1.00 | 7.00 |

DOUBLE BLUE AND PORCELAIN BLUE.

| | | |
|----------------------------------|------|-------|
| Bloksberg, light | 1.30 | 10.00 |
| Charles Dickens | 1.20 | 9.00 |
| Crown Prince of Sweden | 1.20 | 9.00 |
| Garrick, blue, dark centre | 1.30 | 10.00 |
| Prince of Saxony Weimar | 1.25 | 9.50 |
| Van Speijk, deep blue | 1.15 | 8.50 |

SINGLE BLUSH AND CREAMY WHITE.

| | | |
|--|------|------|
| *Grande Blanche, slightly bluish | 1.15 | 8.50 |
| *Grandeur a Merveille, bluish, big spike | 1.20 | 9.00 |
| *La Franchise, bluish white | 1.15 | 8.50 |
| Lord Grey, bluish | 1.20 | 9.00 |
| Mr. Plimsoll, bluish white | 1.20 | 9.00 |

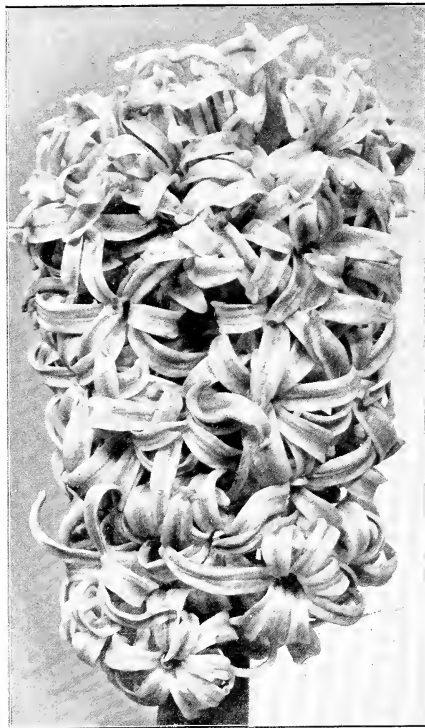
Very much pleased with bulbs.—Columbia, S. C.

The bulbs arrived last week in excellent condition. I am very much pleased with them. Miss F. H., 1-28-14.

Very satisfactory.—Hillsdale, Mich.

The bulbs arrived in fine condition and are very satisfactory. M. W. D., 1-28-14.

"The result is our best testimonial."



GERTRUDE (Dark Rose).

NAMED HYACINTHS.

First-sized Bulbs.

Six at dozen price; 25 at hundred price.

For bedding as well as forcing, it pays to buy first-sized Hyacinths of named varieties. Full spikes of true-to-name Hyacinths are well worth the investment.

You will note that as growers we offer several times as many varieties as listed in most American catalogues, among them the best introductions in recent years.

The varieties marked with * are best for glasses or pots.

What W. K. call "Named Hyacinths first-sized Bulbs" are real first-sized Bulbs, and far superior to those often offered as first-sized Bulbs.

A slight difference in price, a big difference in quality.

Try our first size.

| | | |
|------------------------|------|-------|
| Queen of England | 1.30 | 10.00 |
|------------------------|------|-------|

For Bedding purposes we give you the following combinations, which may be very handy for you.

- Roi des Belges, dark red.
- Mad. van der Hoop, white.
- King of the Blues, dark blue.
- King of the Yellows, golden yellow.

- Gertrude, pink.
- L'Innocence, pure white.

- Roi des Belges, dark red.
- King of the Yellows, yellow.

- L'Innocence, pure white.
- Johan, light blue.

- Sir Wm. Mansfield, purple.
- King of the Yellows, golden yellow.

SINGLE RED.

| | Doz. | 100. |
|---|--------|---------|
| Amy, dark red | \$1.30 | \$10.00 |
| *Etna, half double, large bells | 1.35 | 10.50 |
| Fireball, deep orange-red | 1.60 | 12.00 |
| *Garibaldi, crimson, early forcer | 1.25 | 9.50 |
| *General Pelissier, dark red, forces very early | 1.20 | 9.00 |
| *La Victoire, large crimson spike, early | 1.60 | 12.00 |
| Robert Steyer, fine for bedding | 1.10 | 8.00 |
| *Roi des Belges, big spike | 1.10 | 8.25 |
| Vuurbaak, dark, early | 1.40 | 11.00 |

SINGLE ROSE AND PINK.

| | | |
|---|--------|---------|
| *Baron van Thuyll, pink | \$1.30 | \$10.00 |
| *Cardinal Wiseman, rose, large spike | 1.25 | 9.50 |
| *Charles Dickens, pretty pink, nice flower | 1.30 | 10.00 |
| Fabiola, bright rose | 1.25 | 9.50 |
| *Gertrude, dark rose, large truss | .90 | 6.50 |
| *Gigantea, pale pink, gigantic truss | 1.00 | 7.50 |
| *Jacques, pink, large spike | 1.60 | 12.00 |
| *Lady Derby, rose extra, new | 1.85 | 14.00 |
| *Lord Macaulay, pink, large spike | 1.10 | 8.00 |
| Maria Cornelia, soft rose, very early | 1.15 | 8.50 |
| *Moreno, gigantic flower, deep rose | 1.15 | 8.50 |
| Norma, deep rose | 1.10 | 8.00 |
| *Rosa Maxima, rose, large spike | 1.10 | 8.00 |
| *Rose a Merveille, deep pink, excellent spike | 1.20 | 9.00 |
| Sultane favorite, bright rose, early | 1.20 | 9.00 |

SINGLE PURE WHITE.

| | | |
|---|--------|---------|
| *Alba Maxima, very early | \$1.30 | \$10.00 |
| Alba Superbissima | 1.35 | 10.50 |
| *Albertine, very early | 1.20 | 9.00 |
| Angenis Christina | 1.30 | 10.00 |
| *Baroness van Thuyll, compact spike | 1.35 | 10.50 |
| Blanchard, very early, big spike | 1.25 | 9.50 |
| *Elancheur a Merveille, big spike | 1.20 | 9.00 |
| Grande Vedette | 1.25 | 9.50 |
| *La Grandesse, the best pure white | 1.85 | 14.00 |
| *L'Innocence, fine and early | 1.25 | 9.50 |
| *Mad. van der Hoop, big bells, fine for bedding | 1.20 | 9.00 |
| *Mimi, big bells, fine for bedding | 1.20 | 9.00 |
| *Mina, early | 1.25 | 9.50 |
| *Mont-Blanc, nice spike | 1.30 | 10.00 |
| *Paix de l'Europe | 1.35 | 10.50 |

From Germantown, Pa.—"170 Balls on a single Hyacinth stalk!"

"The Tulips, Narcissus and Hyacinths which we had from you last fall have bloomed far better than any bulbs I have ever seen. Starting the week after Easter and ending last week, we have had continuous bloom. Were so fine that neighbors passing would stop frequently to admire the bulb beds. My sister next door secured bulbs from you at the same time and she also had remarkable success. The Hyacinthsall sent up two large flowers, with the result that the bed was crowded, although the bulbs were planted well apart. One flower on the Gertrude Hyacinth was eleven inches in circumference, about 6 1/2 inches high, and contained one hundred and seventy bells. Have you ever heard of a bloom as large as this? C. B., 5-20-15.

Grown by many, admired by all.

SINGLE LIGHT BLUE.

| | Doz. | 100. |
|--|--------|---------|
| Bismarck, the earliest light blue Hyacinth, very big spike | \$2.40 | \$18.00 |
| *Czar Peter, fine porcelain blue | 1.85 | 14.00 |
| *Enchantress, nicely shaded, light blue | 1.85 | 14.00 |
| *Grand Lilas, pale blue | 1.50 | 11.50 |
| Johan, light, good spike | 1.05 | 7.50 |
| La Peyrouse | 1.20 | 9.00 |
| Leonidas | 1.40 | 11.00 |
| *Lord Derby, large spike | 1.75 | 13.00 |
| *Potgieter, very fine blue | 1.60 | 12.00 |
| Princess Wilhelmina | 1.85 | 14.00 |
| *Queen of the Blues, handsome big light blue spike | 1.75 | 13.00 |
| Regulus | 1.30 | 10.00 |
| *Schotel, pale blue | 1.60 | 12.00 |

SINGLE BLUE AND DARK BLUE.

| | | |
|--|--------|---------|
| *Baron van Thuyl, dark | \$1.60 | \$12.00 |
| Bleu mourant, purplish blue | 1.50 | 11.50 |
| *Captain Boyton, big spike like Gr. Maitre | 1.65 | 12.50 |
| Charles Dickens, compact truss | 1.75 | 13.00 |
| *Grand Maitre, big spike, big bulb | 1.25 | 9.50 |
| King of the Blacks, the darkest blue, nearly black | 2.00 | 15.00 |
| *King of the Blues, dark, good spike | 1.50 | 12.50 |
| Leopold II | 1.40 | 11.00 |
| *Marie, good deep blue | 1.35 | 10.50 |
| Masterpiece, purplish black | 1.75 | 13.00 |
| Uncle Tom, dark | 1.85 | 14.00 |
| William I, dark, early | 1.60 | 12.00 |
| William III, dark, good truss | 1.75 | 13.00 |

SINGLE YELLOW AND ORANGE.

| | | |
|---|--------|---------|
| Alida Jacoba, pure yellow | \$1.85 | \$10.50 |
| City of Haarlem, beautiful yellow | 2.40 | 18.00 |
| *Heriman, orange-yellow | 1.40 | 11.00 |
| *Ida, big spike, one of the finest yellows | 1.50 | 11.50 |
| *King of the Yellows, fine spike, specially recommended | 1.25 | 9.50 |
| La Citronniere, lemon-yellow | 1.30 | 10.00 |
| La Plue d'or, bright yellow | 1.30 | 10.00 |
| L'or d'Australie, pure yellow | 1.25 | 9.50 |
| Sonora, deep yellow | 1.40 | 11.00 |
| *Yellow Hammer, golden yellow | 1.50 | 11.50 |

SINGLE MAUVE AND PURPLE.

| | | |
|--------------------------------|--------|---------|
| Haydn, bluish violet | \$1.40 | \$11.00 |
| *Lord Balfour, mauve | 1.25 | 9.50 |
| *Lord Mayo, mauve | 1.30 | 10.00 |
| *Sir Edwin Landseer | 1.25 | 9.50 |
| *Sir William Mansfield, purple | 1.25 | 9.50 |

**DOUBLE HYACINTHS.
DOUBLE RED, ROSE AND BLUSH.**

| | | |
|---|--------|---------|
| *Bouquet Tendre, well known, early variety, pink | \$1.40 | \$11.00 |
| Czar Nicholas, rosy blush | 1.50 | 11.50 |
| Grootvorst, good spike | 1.60 | 12.00 |
| Koh-i-Noor, semi-double, large truss | 1.50 | 11.50 |
| Lord Wellington, large and magnificent spike | 1.40 | 11.00 |
| *Noble par Merite, large flower, rosy red, extra | 1.50 | 11.50 |
| Prince d'Orange, semi-double rose, splendid spike | 1.40 | 10.75 |

DOUBLE WHITE.

| | | |
|---|--------|---------|
| Bouquet Royal, pure white, fine spike | \$1.50 | \$11.50 |
| Flevo, pure white | 1.40 | 11.00 |
| *Isabella, large spike, extra | 1.35 | 10.50 |
| La Deesse, pure white, early | 1.60 | 12.00 |
| *La Grandesse, pure white, same bells as the single | 1.60 | 12.00 |
| *La Tour d'Auvergne, large spike, very early | 1.35 | 10.50 |

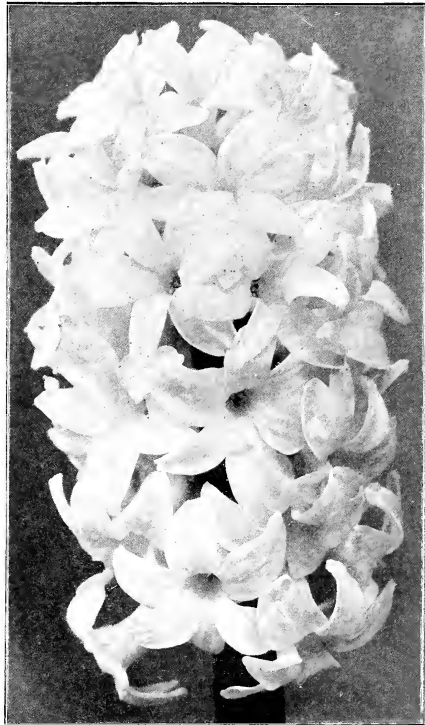
| | | |
|-----------------------------------|------|-------|
| La Virginite, bluish | 1.35 | 10.50 |
| Prince of Waterloo, pretty flower | 1.40 | 11.00 |

DOUBLE BLUE.

| | | |
|---|--------|---------|
| Albion, purplish blue, late | \$1.60 | \$12.00 |
| *Bloksberg, prettily formed spike | 1.75 | 13.00 |
| Charles Dickens, good spike | 1.65 | 12.50 |
| Crownprince of Sweden, violet blue, large spike | 1.60 | 12.00 |
| Garrick, large spike, extra | 1.65 | 12.50 |
| *Lord Raglan, dark blue, light striped | 1.60 | 12.00 |
| Prince of Saxe-Weimar, semi-double, large spike | 1.60 | 12.00 |
| Rembrandt, large spike | 1.75 | 13.00 |
| *Van Speljk, large spike and bells | 1.50 | 11.50 |

DOUBLE YELLOW AND ORANGE.

| | | |
|--|--------|---------|
| Bouquet Orange, good flower | \$1.50 | \$11.50 |
| *Goethe, very fine spike, splendid spike | 1.60 | 12.00 |
| *Jaune Supreme, yellow with rose centre | 1.40 | 11.00 |
| Sovereign, good truss | 1.75 | 13.00 |
| Sunflower, magnificent spike | 1.80 | 13.50 |
| William III, large | 1.50 | 11.50 |

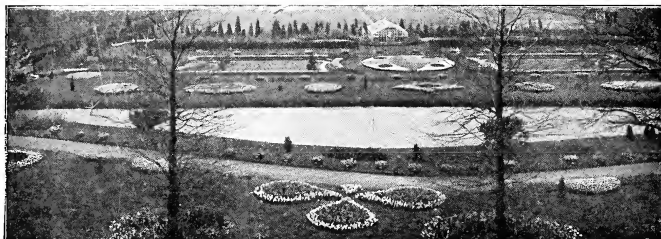


L'INNOCENCE (Pure White).

From Overbrook, Pa.—“More than two large Hyacinths to each bulb.”

“Last fall I purchased ten dozen Hyacinths from your firm for my garden. I am pleased to say that they made the finest display this spring that I have ever seen, and I have grown Hyacinths for over thirty years. They averaged more than two very large blooms to each bulb. The Darwin Tulips won praises from all who saw them—the colors were magnificent and the blooms unusually lasting.” J. L. A., 5-10-15.

“A solid center means a larger flower.”



The Coming Tulips

History tells us that the culture of Tulips was started in Holland in the year 1571. From 1634 until 1637 the famous "Tulpomania" reigned, during which time ridiculous high prices were paid for one bulb.

Every year new specialties are grown by Holland growers, but in nearly all cases they are retained in that country until the growth is larger and they can supply the entire market.

The policy of our house is different—we believe the bulb-lover of America is entitled to these varieties, and we offer them after thorough tests for your approval.

SINGLE VARIETIES

| | Ea. | Doz. | 100. | | Ea. | Doz. | 100. |
|--|--------|--------|---------|---|--------|-------|-------|
| Calippo. Like Herman Schlegel, but far bigger; resembles the White Hawk in habit | \$0.20 | \$2.20 | \$18.00 | Ibis. This sort is of a peculiar color; well, we should say it is after the red cabbage, the outside petals are running into rose, the flower is very big and forces very easily | \$2.00 | | |
| Casuaris. This flower has an excellent form, it resembles the La Reine Maximus, but is deeper rose colored | .30 | 3.20 | 25.00 | La Reine des Reines. (Prosperity) Delicate and lovely pink, very early, splendid forcer | .10 | 1.10 | 9.00 |
| Colibri. The color is lighter yellow than Herman Schlegel; it is yellow all over. It is of a nice, round form and certainly one of the beauties in Early-Tulips | .50 | 5.50 | | La Reine Maximus. An improvement of the well-known La Reine, far bigger | .08 | .75 | 5.00 |
| Columba. This sort is rosy-pink, well formed, short, broad flower | 1.00 | 11.00 | | La Reine Victoria. The pure white La Reine, with all the good capacities of that sort, besides the stems are stronger | .15 | 1.70 | 13.50 |
| Crimson Queen. The color is dark crimson with a mauve shade in it; forces easily and is very showy | 1.00 | 11.00 | | Pellecan. Large white flower lightly suffused with rose on upper petals; one of the biggest flowers | .35 | 3.75 | |
| Cullinan. This flower keeps well a long time, has an excellent form and its color is of finest deep rose | .15 | 1.65 | 13.50 | Princes Juliana. The color is of the finest rose, its form is egg-shaped | 1.25 | 13.75 | |
| Goud Elsje. This sort has a peculiar color, the under half part is yellow, while the upper part is white, suffused with light rose, like La Reine | .20 | 2.20 | 18.00 | Red Hawk. A robust flower; the color is somewhat like Prince of Austria, but outside petals are slightly colored yellow | .15 | 1.65 | 13.50 |
| Herman Schlegel. The yellow La Reine. This flower is of a light yellow color and has the same light rose like the La Reine; it is an easy forcer | .05 | .35 | 2.00 | Rose Hawk. The same robust habit as White Hawk, but light rose colored all over | .15 | 1.65 | 13.50 |
| | | | | Rose La Reine. Something after Prosperity, darker pink and smaller flower | .07 | .60 | 3.90 |
| | | | | Striped Hawk. The same robust habit as White Hawk, but the color is a peculiar combination of red and rose | 2.00 | | |

DOUBLE VARIETIES

| | Ea. | Doz. | 100. | | Ea. | Doz. | 100. |
|---|--------|---------|------|--|------|------|------|
| Apple Blossom. The color is like the Peach Blossom and even finer, but the tulip is not so double as that sort | \$2.00 | \$22.00 | | Mary Garden. Pure yellow, the shape of Murillo, the only pure yellow double tulip in existence | .50 | 5.50 | |
| Boule de Neige. Also a pure white sport of Murillo, which forces easily, the whole when in flower is something after a white Pæony | .50 | 3.25 | | Peach Blossom. Excellent dark silky rose, the finest double rose Tulip known | 2.00 | | |
| Electra. The color is like that of the crimson Queen, the shape is just as that of the Murillo and is has the good capacities of that well-known sort in every respect | 4.00 | | | Schoonoord. A pure white Sport of Murillo, with all the good qualities of that well-variety. Excellent forcer | .06 | .55 | 3.45 |
| | | | | Theeroos (Tea rose). Another Sport of Murillo, called Theeroos (tea rose) because it is both in color and shape like that well-known rose | .10 | .70 | 4.50 |

From Philadelphia, Pa.—"Blooms of exceptional color and texture."

"The flowers from the last bulbs bought in the fall were superb. Blooms were of exceptional color and texture and I will be glad to order again." H. J., 5-11-15.

W & K—the largest quality growers in Holland.

TULIPS

Plant 4 inches deep (to top of bulb) and 4 inches apart in beds.

The culture of Tulips is one of our great specialties. Being owners of the very best grounds for Tulips (rich loam and pure sand), we dare say our Tulips are unsurpassed and sure to give the greatest satisfaction, for forcing as well as for bedding purposes.

ARRANGEMENTS OF COLORS FOR BEDDING.

Chrysolora and Dusart, or **Artus** or **Belle Alliance**.
Coeur Cardinal, bedded by itself, makes one of the most beautiful beds.

Cottage Maid and Yellow Prince.

Duc De Berlin and White Hawk.

Duchesse de Parma, all by itself.

Keizerskroon, all by itself.

La Reine and Artus.

Maes, unsurpassed when bedded without anything else.

Pottebakker White and Chrysolora.

Princess Marianne and Ophir d'Or.

Prince of Austria and Herman Schlegel.

President Lincoln, all by itself.

Rose Gris de Lin, separate in one bed.

Thomas Moore, all by itself.

Van der Neer and Ophir d'Or.

Vermilion Brilliant and White Hawk.

SORTS RECOMMENDED FOR FORCING.

A very handy way to force Tulips is the following:

Make a little box say 18" x 9" x 5", putting the boards at the bottom one-quarter of an inch apart for drainage. Fill the box three-quarters with good soil and place the Tulips in, covering them up. They may be placed almost touching each other. Put the box in the ground and cover deep with ashes or soil or manure. After some eight weeks when the bulbs have sufficient roots, dig the boxes up and place in light and heat, keeping them well moist. When the bulbs are in flower, dig them up very carefully and place in fancy basket or pot filled with damp moss or earth. They are then very even and will last as long as if forced in the pots.

For forcing the following varieties are highly desirable.

If you will note these suggested varieties you may have a complete succession of bloom from Christmas until the Easter season.

For Flowering in December and Early January.

THE DUC VON THOL VARIETIES, MON TRESOR, PROSPERITE, THOMAS MOORE, VERMILION BRILLIANT and WHITE POTTEBAKKER.

For Flowering January until March.

BELLE ALLIANCE, DUCHESS DE PARMA, KEIZERSKROON, LA REINE, PRINCE OF AUSTRIA, ROSE GRIS DE LIN, VERMILION BRILLIANT, YELLOW PRINCE.

For Flowering from Early March to Early April.

BELLE ALLIANCE, COULEUR CARDINAL, FLAMINGO, LA REINE, PRINCE DE LIGNY, PRINCE OF AUSTRIA, PROSPERITY, ROSE GRIS DE LIN, ROSE LUISANT, VERMILION BRILLIANT, WHITE HAWK, YELLOW PRINCE.

EARLY SINGLE TULIPS.

"DUC VAN THOL" THE VERY EARLIEST.

| | Doz. | 100. | 1000. |
|---|--------|--------|---------|
| Cocheneal , glowing vermilion, very early... | \$0.40 | \$2.25 | \$18.00 |
| Crimson | .23 | 1.25 | 10.00 |
| Red and Yellow , maximus | .35 | 2.00 | 16.00 |
| Rosy | .28 | 1.50 | 12.00 |
| Scarlet | .28 | 1.50 | 12.00 |
| Vermilion | .23 | 1.25 | 10.00 |
| Violet | .23 | 1.20 | 9.50 |
| White Maximus | .23 | 1.25 | 10.00 |
| Yellow | .42 | 2.50 | 20.00 |
| All colors mixed | .23 | 1.25 | 10.00 |

The varieties marked 1 generally begin to flower about the 20th of April, those marked 2 after the first of May.

By selecting bulbs preceded by the same figure, and of the colors desired, you find the problem of making up a bed of Tulips, pleasing in color combination, which will bloom at about the same time, very much simplified.



From Beverly, Mass.—“Superior to the blooms in the Boston Public Garden.”

“The Tulips were fine. My ‘Duchess de Parma,’ ‘Maes,’ and ‘Rose Gris de Lin’ were equal, if not superior to the blooms in the Boston Public Garden. My mixed bed also was very good.” P. A. T., 5-9-13.

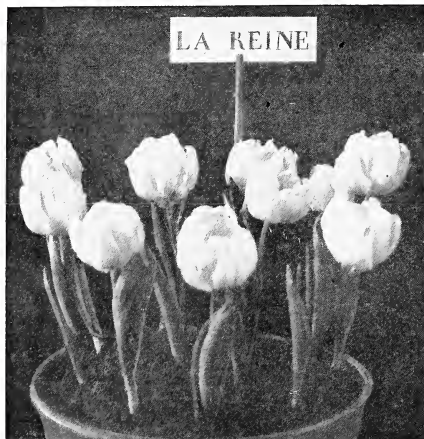
From Nelsonville, N. J.—“Don’t see how they could be finer.”

“Holland Bulbs received in fine shape. I don’t see how they could be better.” Mrs. E. N. N., 11-2-14.

Backed by a quarter-century of experience.

EARLY SINGLE TULIPS—Continued.

| | Doz. | 100. | 1000. |
|---|--------|--------|---------|
| MIXED EARLY SINGLE TULIPS | \$0.15 | \$0.85 | \$7.25 |
| 1—Adeline, rosy violet, with a yellow centre. Height 8 inches | \$0.43 | \$2.45 | \$19.60 |
| 2—Alba Regalis, white, faintly edged pale yellow. Height 10 inches | .30 | 1.65 | 13.20 |
| Arms of Leiden, white flamed carmine. | .23 | 1.25 | 10.00 |
| 2—Artus, rich scarlet, with clear yellow centre. Height 10 inches | .20 | 1.10 | 8.75 |
| 1—Belle Alliance (Waterloo), crimson-scarlet, with yellow centre. Height 9 inches | .30 | 1.75 | 14.00 |
| Berehem, brilliant clear carmine | .43 | 2.50 | 20.00 |
| 1—Bride of Haarlem, carmine, feathered white. Height 8 inches | .62 | 3.50 | 28.00 |
| 1—Brilliant Star, brilliant scarlet, color and habit as Vermilion Brilliant, but much larger, splendid early forcer | .95 | 5.50 | 44.00 |
| 2—Brutus, orange scarlet, edged yellow. Height 8 inches | .40 | 2.25 | 18.00 |
| 1—Canary Bird, rich yellow. Height 11 ins. | .28 | 1.55 | 12.40 |



| | | | |
|--|--------|--------|---------|
| 2—Cerise Gris de Lin, rosy-violet. Height 10 inches | \$0.80 | \$4.75 | \$38.00 |
| 1—Chrysolora, deep golden-yellow. Height 11 inches | .30 | 1.75 | 14.00 |
| 1—Claremont Gold, orange-scarlet. Height 12 inches | .55 | 3.25 | 26.00 |
| 1—Claremont Silver, carmine and white. Height 12 inches | .55 | 3.25 | 26.00 |
| 1—Claremont White, white. Height 12 inches | .72 | 4.25 | 34.00 |
| 1—Cottage Boy, orange-red bordered orange-yellow. Height 9 inches | .42 | 2.50 | 20.00 |
| 1—Cottage Maid, lovely rosy pink shading to cream-white. Height 9 inches | .23 | 1.25 | 10.00 |
| 2—Couleur Cardinal, intense crimson, shaded with plum on the exterior, yellow centre. Height 11 inches | .37 | 2.15 | 16.75 |
| A grand Tulip, which makes a very decided show in a bed. | | | |

| | Doz. | 100. | 1000. |
|---|------|------|-------|
| 2—Couleur Ponceau, cerise, flushed white. Height 1 foot | .23 | 1.25 | 10.00 |
| 1—Crimson King, crimson. Height 12 ins. | .23 | 1.25 | 10.00 |
| 1—Duc de Berlin, scarlet, edged orange-yellow. Height 8 inches | .30 | 1.75 | 14.00 |
| 2—Duchess of Parma, large orange-red with a bold irregular margin of deep yellow, suffused with rose on the outer petals. Height 13 inches | .24 | 1.30 | 10.40 |
| 2—Dusart, crimson-scarlet, with greenish yellow centre. Height 10 inches | .27 | 1.45 | 11.50 |
| 2—Flamingo, shape like White Hawk, color white, flaked rosy red | .80 | 4.65 | 37.20 |
| A variety which has not been on the market very long. In forcing it gives great satisfaction, the color resembling the beautiful plumage of the flamingo bird. | | | |
| 1—Fred. Moore, bright orange shaded with scarlet, handsome and effective. Height 15 inches | .23 | 1.25 | 10.00 |
| Very sweet-scented and of a fashionable color. | | | |
| 2—Goldfinch, the pure yellow golden Prince | .27 | 1.45 | 11.50 |
| 1—Grace Darling, large dull orange-scarlet, with dark blue centre. Height 12 ins. | .62 | 3.50 | 28.00 |
| 1—Joost van den Vondel, rosy red, more less flaked with white, and suffused with delicate rose on the outside. Height 10 inches | .37 | 2.15 | 17.20 |
| 1—Joost van den Vondel, white, pure white extremely beautiful. Height 10 inches. | .62 | 3.50 | 28.00 |
| Kardinalshat, brown bordered orange buff | .23 | 1.25 | 10.00 |
| 1—Keizerkroon (Grand Duc), crimson-scarlet, edged bright yellow. Height 14 inches | .42 | 2.50 | 21.00 |
| Owing to its enormous cup and broad foliage this variety is generally looked upon as one of the best for outdoor work. The striking contrast of the yellow and red in the flower makes it very showy. | | | |
| 1—King of the Yellows, pure yellow in the way of Canary Bird, but far superior. Height 12 inches | .30 | 1.65 | 13.20 |
| 2—Koh-i-noor, very dark rich scarlet. Height 7-9 inches | .70 | 4.00 | 32.00 |
| La Precieuse (vide Cottage Maid) | .23 | 1.25 | 10.00 |
| 1—La Reine (Queen Victoria), white suffused with delicate pink. Height 11 inches | .18 | 1.00 | 8.00 |
| 1—La Remarquable, dark purple. Height 10 inches | .80 | 4.75 | 38.00 |
| 1—Le Matelas, silver pink, tipped with white and shaded with bluish white, early and very effective. Height 1 ft., | .50 | 2.95 | 23.50 |
| 2—L'Immaculee, pure white. Height 8 ins. | .21 | 1.15 | 9.20 |
| 1—Maes, rich scarlet, tinged with purple on the interior, centre bronze surrounded with bright yellow; the finest tulip for bedding. Height 10 inches | .47 | 2.75 | 22.00 |
| 1—Mon Tresor, intense golden yellow. Height 11 inches | .40 | 2.25 | 18.00 |
| Is very easy to force, one of the varieties you should start your experiments with because you will be certain of good results if you follow our instructions. | | | |
| 2—Nelly (Grande Blanche), pure white. Height 9 inches | .23 | 1.25 | 10.00 |

From St. Paul, Minn.—"Firmest I ever handled—could have sold all at an advance."

"Bulbs reached me in good condition. Everyone satisfied. Words fail me in expressing my thanks and appreciation, especially for the extras, as they certainly were unexpected. I have planted about 200 to date and I am more than pleased with the bulbs, as they are the firmest and best looking bulbs I have ever handled. I hope to place an order for Gladiolus soon. Could have sold all my bulbs and a lot more at a nice advance, but I did not buy to sell." M. E. G., 10-30-14.

Selected and packed to your order at the fields.

| | Doz. | 100. | 1000. |
|---|--------|--------|---------|
| 1— Ophir d'Or , canary yellow, very sweet scented. Height 11 inches. The very best single yellow tulip for bedding.. | \$0.30 | \$1.65 | \$13.20 |
| 2— Pink Beauty , bright rose pink, shading to blush white near the yellowish centre. Height 11 inches. Award of merit R. H. S., May 8th, 1900 | .80 | 4.75 | 38.00 |
| 1— Pottebakker , pure yellow. Height 13 inches | .40 | 2.25 | 18.00 |
| 2— Pottebakker , scarlet (Verboom), rich scarlet with a yellow centre. Height 13 inches | .40 | 2.15 | 17.20 |
| 1— Pottebakker , white, large cup-shaped pure white flowers. Height 13 inches.. | .42 | 2.50 | 20.00 |
| 2— Potter , rich purple. Height 10 inches.. | .75 | 4.25 | 34.00 |
| 1— President Lincoln (Queen of the Violets) , rose-purple, edged with white. Height 8 inches | .75 | 4.25 | 34.00 |
| 1— Prince de Ligny , golden yellow. Height 10 inches | .23 | 1.25 | 10.00 |
| 2— Prince of Austria , scarlet suffused with orange, yellow centre, sweet scented. Height 12 inches | .30 | 1.65 | 13.20 |
| 1— Princess Marianne , creamy-white, suffused with pink, shading to rose; very large. Height 10 inches | .22 | 1.15 | 9.20 |
| 1— Proserpine , bright rose, suffused with purple, very handsome. Height 12 inches | .62 | 3.50 | 28.00 |
| Also a very easy forcing variety. | | | |
| 1— Queen of the Netherlands , large globe-shaped tulip of softest rosy white. Height 13 inches | .30 | 1.75 | 14.00 |
| 1— Queen of the Violets (President Lincoln) , Rachel Ruysch , cherry color | .72 | 4.25 | 34.00 |
| 1— Rembrandt , large glowing crimson. Height 12 inches | .25 | 1.35 | 10.75 |
| 1— Rembrandt , large glowing crimson. Height 12 inches | .47 | 2.75 | 22.00 |
| 2— Rosamundi Huyckman , white tipped rose and suffused rose pink. Height 10 inches | .22 | 1.15 | 9.20 |
| Rose Aplatie , soft rose | .48 | 2.85 | 22.80 |
| 2— Rose Gris de Lin , rose flushed with pink, excellent shape. Height 8 inches | .20 | 1.10 | 8.75 |
| A most beautiful and useful variety which should be included in every order. | | | |
| 2— Rose Luisante , dark silky rose, the finest rose tulip. Height 9 inches | .40 | 2.20 | 17.60 |
| 1— Sir Thomas Lipton , rich crimson-scarlet, Standard Golden , scarlet, tipped and flaked with yellow. Height 10 inches.. | .55 | 3.25 | 26.00 |
| 2— Standard Royal (Silver Standard) , white ground, flaked and tipped with scarlet. Height 10 inches | .75 | 4.50 | 36.00 |
| 2— Standard Royal (Silver Standard) , white ground, flaked and tipped with scarlet. Height 10 inches | .75 | 4.50 | 36.00 |
| 2— Thomas Moore , bright orange, shaded with scarlet; very handsome and effective. Height 14 inches | .23 | 1.25 | 10.00 |
| 1— Van der Neer , large violet purple. Height 10 inches | 1.00 | 6.00 | 47.50 |
| 2— Van Gooijen , fine rose. Height 9 inches, Verboom , rich scarlet, yellow centre. Height 13 inches | .30 | 1.75 | 14.00 |
| 1— Vermilion Brilliant , dazzling scarlet, with yellow centre. Height 10 inches, This variety is considered by a good many as the best scarlet. It certainly deserves all the credit which is given to it. | .38 | 2.15 | 17.20 |
| 1— Vermilion Brilliant , dazzling scarlet, with yellow centre. Height 10 inches, This variety is considered by a good many as the best scarlet. It certainly deserves all the credit which is given to it. | .38 | 2.15 | 17.20 |
| 1— Vesuvius , deep scarlet. Height 10 inches, | .47 | 2.75 | 22.00 |
| 1— White Hawk , pure white, robust habit; one of the very best white Tulips. | | | |

| | Doz. | 100. | 1000. |
|--|--------|--------|---------|
| Height 12 inches. (Fine white for Easter) | \$0.42 | \$2.50 | \$20.00 |
| This flower is one of the largest, and will add wonderfully to your garden. | | | |
| 2— White Swan , true, pure white, egg-shaped flowers. Height 14 inches | .28 | 1.50 | 12.00 |
| This variety cannot be forced, but for outdoor planting it is very useful. Its name indicates its shape. The flowers are borne on long Swan-necked-shaped stems, which give it a very graceful appearance. | | | |
| 1— Wouwerman , rich dark purple. Height 10 inches | .75 | 4.50 | 36.00 |
| 2— Yellow Prince , rich yellow, sweet-scented. Height 9 inches | .25 | 1.35 | 10.80 |
| Yellow Queen , deep yellow, extra | .47 | 2.75 | 22.00 |



EARLY DOUBLE TULIPS.

The varieties marked 1 generally begin to flower last week of April; those marked 2 first week in May, while the latest to flower are marked 3.

ARRANGEMENTS FOR PLANTING DOUBLE TULIPS IN BEDS.

Double tulips should be placed one variety in each bed; grouping different varieties does not produce such a good effect. We advise for that purpose the following splendid varieties: **COURONNE D'OR, LA CANDEUR, LADY PALMERSTON, LE MATADOR, MURILLO, SALVATOR ROSE, WILLIAM III and LA CANDEUR**, all by itself.

From Angels Camp, Cal.—"I only regret that I did not order more."

"I am pleased to write that I received the tulip bulbs ordered from you and I never saw better bulbs—expect a gorgeous bed of them next spring. I only regret that I did not order some hyacinths at the same time. Thanks for such fine, healthy bulbs—have shown them and recommended them to my friends." Mrs. K. C. C.

Packed at nursery—shipped in original packages.

DOUBLE TULIPS SUITABLE FOR FORCING.

For Flowering in January.

SALVATOR ROSA.

For Flowering End of January to End of March.

COCHENILLE, COURONNE D'OR, EL TOREADOR, IMPERATOR RUBRORUM, MURILLO, TITIAN, TOURNESOL, YELLOW TUORNESOL.

| | Doz. | 100. | 1000. |
|--|--------|--------|---------|
| 2—Alba Maxima, pure white. Height 1 foot. | \$0.30 | \$1.65 | \$13.20 |
| 1—Blanche Hatve, pure white. Height 13 inches. Very beautiful | .42 | 2.50 | 20.00 |
| 1—Cochenille, fiery scarlet red | .40 | 2.35 | 18.80 |
| 1—Couronne des Roses, rich pure rose, shaded white. Height 11 inches. Extra. | .55 | 3.25 | 26.00 |
| 1—Couronne d'Or, deep yellow, marked with orange red. Height 11 inches | .42 | 2.50 | 20.00 |
| Crown of Gold would be the English name for this variety, and it certainly is a golden Crown when in flower. It makes a splendid bedding Tulp. | | | |
| Cuyf, cherry red, novelty | .62 | 3.50 | 28.00 |
| 2—El Toreador, reddish bronze and orange with a yellow base; very handsome. Height 11 inches. Award of Merit R. H. S., May 9th, 1900 | .75 | 4.50 | 36.00 |
| 1—Fluweelen Mantel (Velvet Gem), deep crimson, edged dark orange-yellow. Height 10 inches | .40 | 2.25 | 18.00 |
| 1—Gloria Solis, rich yellow, running to deep red. Height 12 inches | .32 | 1.85 | 14.80 |
| Graaf van Leicester, yellow edged orange, Helianthus, red, yellow bordered; large flowers | .42 | 2.50 | 20.00 |
| 2—Imperator Rubrorum, bright scarlet. Height 12 inches | .40 | 2.25 | 18.00 |
| 2—La Candeur, pure white. Height 11 inches. Remains in flower a very long time | .23 | 1.25 | 10.00 |
| 1—Lady Palmerston, deep rose, shaded with white at base. Height 10 inches | .40 | 2.25 | 18.00 |
| 2—La Grandesse, soft rose, shaded white. Height 12 inches | .40 | 2.35 | 18.80 |
| 1—Le Matador, scarlet with purple glow at the outside of the petal. Height 12 inches. Extremely beautiful | .42 | 2.45 | 19.60 |
| 2—Le Blason, bluish pink. Height 11 inches, Leo XIII, light red | .42 | 2.45 | 19.60 |
| 2—Lord Beaconsfield, brilliant crimson rose, the shape of the flower resembles a giant Ranunculus. Height 10 inches. | .42 | 2.45 | 19.60 |
| 2—Murillo, delicate bluish pink. Height 10 inches | .22 | 1.15 | 9.20 |
| Most decidedly one of the best double Tulips known. It is very fine for forcing purposes as well as for outside work. | | | |
| Parmesiano, rosy red; splendid | .42 | 2.50 | 20.00 |
| 1—Princess Alexandra, scarlet and yellow. Height 10 inches | .40 | 2.25 | 18.00 |
| 3—Queen of the Netherlands, white flushed rose. Height 10 inches | .70 | 4.00 | 32.00 |
| 1—Raphael, pink shaded rose; extra. Height 9 inches | .62 | 3.50 | 28.00 |
| 2—Rex Rubrorum, bright scarlet. Height 10 inches | .32 | 1.85 | 14.80 |
| 2—Rose blanche, snow-white, excellent bedding tulip. Height 8 inches | .28 | 1.50 | 12.00 |



MURILLO.

| | Doz. | 100. | 1000. |
|---|------|------|-------|
| 2—Rosine, white tinged rose. Height 13 in. | .30 | 1.75 | 14.00 |
| 2—Rubra Maxima, dazzling scarlet, splendid bedding variety. Height 10 inches | .30 | 1.65 | 13.20 |
| 1—Salvator Rosa, beautiful deep rose; extra. Height 10 inches | .30 | 1.75 | 14.00 |
| 2—Titian, scarlet, edged yellow. Height 10 inches | .37 | 2.15 | 17.20 |
| 2—Tourneol, rich scarlet, edged yellow, very showy. Height 11 inches | .50 | 3.00 | 24.00 |
| 2—Tourneol Yellow, bright yellow, slightly shaded orange. Height 11 inches | .42 | 2.45 | 19.60 |
| 2—Vuurbaak, bright scarlet, with a slight flush of orange, when fully open, very handsome. Height 12 inches | .42 | 2.50 | 20.00 |
| 2—William III, rich orange scarlet; extra. Height 12 inches | .40 | 2.25 | 18.00 |

LATE DOUBLE TULIPS.

Very Tall Growing Varieties (Not Adapted for Forcing).

| | Doz. | 100. | 1000. |
|--|--------|--------|---------|
| Admiral Kinsbergen, red and yellow | \$0.42 | \$2.45 | \$19.60 |
| Blaue Vlag (Lord Wellington), blue | .95 | 5.50 | 44.00 |
| Marriage de ma Fille, white feathered crimson rose; very large and elegant. Height 14 inches | .80 | 4.65 | 37.20 |
| Overwinnaar, blue and white, striped and spotted | .58 | 3.40 | 27.20 |
| Faeny Gold, red and gold striped | .30 | 1.75 | 14.00 |
| Faeny red, scarlet | .30 | 1.75 | 14.00 |
| Yellow Rose, pure yellow | .30 | 1.75 | 14.00 |

From Detroit, Mich.—"Most beautiful collection as to size and color I have ever seen."

"I am certainly delighted with the results obtained this year, and believe I have the most beautiful collection of Tulips, both as to size, variety and color, that I have ever seen. I have no objection to your using my letter as a testimonial, but think perhaps I could have given you one that is even stronger than the one I sent you the other day, without being at all extravagant language." C. D. B., 5-20-14.

Our bulbs have flourished in all sections of the U. S.

VARIEGATED-LEAVED TULIPS.

The unusually attractive variegated foliage of these Tulips and the pleasing flowers are sure to make them popular in America once they are better known. Yellow Rose, particularly, deserves to be more planted—blooms late, bears sweet-scented double flowers of an excellent yellow.

SINGLE.

| | Doz. | 100. | 1000. |
|--|--------|--------|---------|
| Purple crown, golden yellow border | \$0.62 | \$3.50 | \$28.00 |
| Yellow Prince, bright golden, yellow edged, extra | .40 | 2.25 | 18.00 |

DOUBLE.

| | | | |
|---|-----|------|-------|
| La Candeur, silver variegated | .62 | 3.50 | 28.00 |
| Rex Rubrorum, flowers rosy red, leaves silver variegated, extra | .42 | 2.50 | 20.00 |
| Tournesol, rich scarlet, edged yellow gold variegated | .75 | 4.50 | 36.00 |
| Yellow Rose, edged yellow, very striking .. | .42 | 2.50 | 20.00 |

LATE SINGLE TULIPS.

BYBLOOMS.

| | | | |
|-----------------------|--------|--------|---------|
| Mixture | \$0.30 | \$1.75 | \$14.00 |
| Named Varieties | .42 | 2.45 | 19.60 |

BIZARDS.

These bizard Tulips, blooming in late May, are being used largely for naturalizing in borders and for oddity beds. Imagine the wonderful contrast of purple, crimson and brown markings on the yellow grounds of these large, showy flowers, you will realize why these are so popular in Europe and the British Isles for their outdoor effects and cutting purposes.

| | | | |
|-----------------------|--------|--------|---------|
| Mixture | \$0.36 | \$1.75 | \$14.00 |
| Named Varieties | .42 | 2.45 | 19.60 |

BREEDERS.

| | | | |
|-------------------------------|-----|------|-------|
| In fine named Varieties | .42 | 2.45 | 19.60 |
| Mixed, all colors | .35 | 1.75 | 14.00 |

PARROT (or Dragon) TULIPS.

In the whole garden year nothing is more showy, more grotesque than the fragrant Parrot (or Dragon) Tulips. The waxy, irregular outlines; the brilliantly streaked petals, the oddly grotesque fashion in which they combine contrasting colors, are responsible for the growing interest being shown by the American public.

They bloom outdoors about the middle of May; have large flowers on graceful stems.

| | Doz. | 100. | 1000. |
|---|--------|--------|--------|
| Mixture | \$0.22 | \$1.15 | \$9.75 |
| Amiral de Constantinople, scarlet | .30 | 1.45 | 11.50 |
| Cramoise Brilliant, carmine | .30 | 1.45 | 11.50 |
| Gloriosa, red and yellow | .30 | 1.45 | 11.50 |
| Lutea Major, yellow | .30 | 1.45 | 11.50 |
| Markgraaf van Baden, red and yellow | .30 | 1.45 | 11.50 |
| Monstre rubra major, scarlet, extra for forcing and for bedding | .30 | 1.45 | 11.50 |
| Perfecta, yellow and red | .30 | 1.45 | 11.50 |

From Quincy, Mass.—“Fine bulbs—beautifully packed.”

“The Bulbs have arrived—they got here this morning. FINE BULBS—BEAUTIFULLY PACKED. I feel sure if they don't do well THE FAULT WILL BE OURS.” A. M. T., 10-12-12.

From Duluth, Minn.—“Best I ever had.”

“Two years ago I bought some Tulips of you, and they are the best I have ever had from anyone.” D. R. S., 5-26-14.

51% customers 1912 enlarged order by 250% for 1913.



PARROT (or Dragon) TULIP.

REMBRANDT TULIPS.

New Race of Striped Late Tulips.

| | Doz. | 100. | 1000. |
|-----------------------------------|--------|--------|---------|
| Collection of 3 named sorts | \$0.75 | \$4.50 | \$36.00 |
| Collection of 6 named sorts | .80 | 4.75 | 38.00 |
| Finest Mixture | .62 | 3.50 | 28.00 |

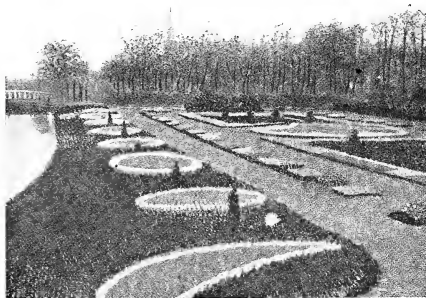
MAY-FLOWERING TULIPS.

Amongst the following the most beautiful objects will be found for the herbaceous border as well as for other decorative purposes.

As their large, brilliant flowers are borne on long, sturdy stems, the May-flowering Tulips furnish excellent flowers for cutting during the middle of that month, when bloom is scarce. The Gesmerianas are distinctive for their various eyes or centres. These Tulips should be planted outdoors only—they do not force well.

| | Doz. | 100. | 1000. |
|--|--------|--------|---------|
| American Lac (Hobbema), large, satiny lilac-salmon | \$1.10 | \$6.50 | \$52.00 |
| Beauty of America, creamy-white and pink, .. | .45 | 2.45 | 19.60 |
| Billietiana, yellow, flaked red | .30 | 1.65 | 13.20 |
| Bouton d'or (Golden Beauty), the finest and deepest golden-yellow tulip for cutting... | .30 | 1.75 | 14.00 |
| Caledonia, bright orange-scarlet | .30 | 1.75 | 14.00 |

MAY-FLOWERING TULIPS—Cont.



| | Doz. | 100. | 1000. |
|---|------|-------|-------|
| Gesneriana Rosa , rosy carmine, black centre | .23 | 1.25 | 10.00 |
| Gesneriana Macrospella , crimson-scarlet, Gesneriana Major (<i>Spathulata</i>), rich crimson scarlet, blue black centre; very showy | .35 | 2.00 | 16.00 |
| Golden Crown , golden yellow, edged red... | .18 | 1.00 | 8.00 |
| Golden Eagle , deep yellow | .30 | 1.75 | 14.00 |
| Greigi , gigantic flower, scarlet-orange, foliage spotted purplish brown | 1.50 | 9.00 | 70.00 |
| Inglescombe Pink , salmon rose | .40 | 2.25 | 18.00 |
| Inglescombe Scarlet , brilliant scarlet, black base | .50 | 2.95 | 23.60 |
| Inglescombe Yellow , may be called the yellow Darwin tulip, large flowers of a perfect form, glossy canary yellow, very beautiful | 1.00 | 6.00 | 48.00 |
| Isabella (<i>Shandon Bells</i> , <i>Blushing Bride</i>), creamy yellow changing to dark magenta | .23 | 1.25 | 10.00 |
| La Candeur (<i>Parisian White</i>), pure white, afterwards suffused with rose | .35 | 2.00 | 16.00 |
| La Merveille , scarlet suffused with apricot orange | .23 | 1.25 | 10.00 |
| Mrs. Moon , large yellow, extra fine | 1.10 | 6.50 | 52.00 |
| Parisian Yellow , rich lemon-yellow, with a deeper centre | .30 | 1.65 | 13.20 |
| Picote (<i>Maiden's Blush</i>), white, graceful recurved petals, margined rose, elegant flower | .30 | 1.60 | 12.50 |
| Primrose Beauty , belongs to the same type as Miss Willmott, color soft primrose, changing to white | .40 | 2.25 | 18.00 |
| Retroflexa , light yellow with elegantly recurved petals, fine for cutting | .38 | 2.15 | 17.20 |
| Royal White , pure white with yellow centre, Scarlet Mammoth , large crimson, dwarf .. | .67 | 3.75 | 30.00 |
| Sweet Nancy , white edged lilac | .25 | 1.35 | 10.80 |
| Viridiflora , green, edged yellow | .55 | 3.25 | 26.00 |
| Viridiflora Præcox , beautiful large flowers, soft green, edged yellow | 4.50 | 25.00 | |
| Vitellina , pale primrose, passing off pure white, tall and exceedingly handsome.. | .85 | 5.00 | 40.00 |
| Zomerschoon , flesh color, striped with salmon red. 40 cents each | 4.75 | | |

DARWIN TULIPS

We strongly recommend this class of Tulips for garden decoration in groups, in the herbaceous border and amongst shrubs.

| | Doz. | 100. | 1000. |
|--|--------|--------|---------|
| Assortment in 25 named varieties | \$0.62 | \$3.50 | \$28.00 |
| Assortment in 10 fine named varieties | .30 | 1.50 | 12.75 |
| Ariadne , fiery scarlet red | .85 | 5.00 | 40.00 |
| Ant. de Barry , brownish velvet red | .40 | 2.45 | 19.60 |
| Ant. Rozenn , lovely rose tinged apricot; Andromeda , dark violet-red flower of strong growth | .72 | 4.25 | 34.00 |
| Baronne de la Tonnyay , vivid rose | .42 | 2.50 | 20.00 |
| Bruno , a large deep brown-red flower of nice shape | 1.00 | 5.75 | |
| C. J. Salter , bright rose, fine flower | .42 | 2.45 | 19.60 |
| City of Haarlem , brilliant scarlet with a pure white centre, very large | 4.50 | 35.00 | |
| Clara Butt , soft delicate pale salmon rose, a flower of remarkable beauty | .42 | 2.50 | 20.00 |
| Cordelia , glowing violet-crimson, very handsome | .70 | 4.00 | 32.00 |
| Donders , crimson, dark violet centre | .47 | 2.75 | 22.00 |
| Dream , large lilac | .62 | 3.50 | 28.00 |
| Edmee , vivid rose pink | .80 | 4.75 | 38.00 |
| Etna , bright red | .75 | 4.50 | 36.00 |
| Ergusti , dull violet, inside of petals darker, white base | 1.05 | 6.25 | |
| Europe , bright carmine red; extra | .60 | 3.45 | 27.50 |
| Farncombe Sanders , fiery scarlet | .72 | 4.25 | 34.00 |
| Faust , dark violet | 1.40 | 8.00 | 64.00 |
| Fra Angelico , dark brownish-black | .67 | 3.50 | 28.00 |
| Glory , brilliant scarlet | .50 | 3.00 | 25.00 |
| Glow , brilliant glowing vermilion, centre blue, margined white | .53 | 3.10 | 26.00 |
| Gudin , light blue, slightly edged with an even paler shade of same color | 1.10 | 6.50 | 52.00 |
| Gretchen , large globular flower; outside bluish, inside soft bluish; very beautiful, Gustav Dore , bright rose | .50 | 3.00 | 24.00 |
| Hecla , deep crimson maroon; very beautiful, Isis , bright crimson | .95 | 5.50 | 44.00 |
| Kate Greenaway , white flushed lilac; very late and beautiful | .47 | 2.75 | 22.00 |
| La Candeur (<i>White Queen</i>), lovely soft white, slightly tinged bluish, anthers black; a beautiful, large, globular, erect flower | .72 | 4.25 | 34.00 |
| Lantern , silvery lilac, changing to white .. | .40 | 2.25 | 18.00 |
| La Tristesse , lilac blue; extra | .95 | 5.50 | 44.00 |
| Mixed , all colors | .30 | 1.50 | 12.75 |

From Philadelphia, Pa.—“Favorable comment regarding size and color.”

“The bulbs purchased from you last fall have given remarkable satisfaction. The Tulips, especially the Murillo doubles, and the Darwins, in my garden have given rise to a great deal of very favorable comment regarding size and colors.”
H. S. T., 5-11-15.

Suggestions for designs of beds given willingly.

DARWIN TULIPS--Cont.

Grown for cut flowers, they will prove very valuable at a time that our gardens yield so little to decorate our rooms. They flower during the middle part of May, a time in which the spring flowers are over and the summer flowers, such as roses, have not yet come in.

Growing to a height of a couple feet, with perfectly colored flowers double the size of an ordinary Tulip, the Darwin deserves to be thoroughly interspersed along the borders. It is well to put Darwin Tulips at the back—other May-flowering Tulips in front, and a border of early Tulips if you want almost continuous bloom, while the other plants are getting started.

By slowly forcing in pots they may be had in bloom in March or even earlier; most of the varieties improve in color by protection under glass or canvas. The list of varieties we offer is carefully selected and includes nothing but fine varieties. We have discarded a great many varieties which we considered inferior to those we now offer.



| | Doz. | 100. | 1000. |
|---|--------|---------|-------|
| La Tulipe Noire (The Black Tulip) , very large | \$2.75 | \$15.00 | |
| Loveliness , soft rosy carmine, extra | .47 | 2.75 | 22.00 |
| Marconi , violet white centre, large | .95 | 5.50 | 44.00 |
| Massachusetts , beautiful light rose | .62 | 3.50 | 28.00 |
| Massenet , apple blossom extra | .85 | 5.00 | 40.00 |
| May Queen , soft rose, large and beautiful | .58 | 3.25 | 26.00 |
| Melicette , deep lilac | 1.35 | 7.75 | 62.00 |
| Mme. Krelage , vivid pink, light bordered, extra ... | .47 | 2.75 | 22.00 |
| Mrs. Cleveland , delicate pink | .70 | 4.00 | 32.00 |
| Nauticus , purplish rose, large | .40 | 2.25 | 18.00 |
| Nora Ware , silvery lilac, shaded white, extremely beautiful | .70 | 4.00 | 32.00 |
| Negro , brownish dark red | .70 | 4.00 | 32.00 |
| North Dacotah , fiery red, white basal blotch | .42 | 2.45 | 19.60 |
| Nymph , pale lilac | .42 | 2.45 | 19.60 |
| Ouida , fiery red | .55 | 3.25 | 26.00 |
| Painted Lady , soft milky white flowers on dark purple stems; flowers resemble the beautiful Nymphaea or Waterlily | .50 | 3.00 | 24.00 |
| Peter Barr , bright rose | .40 | 2.45 | 19.60 |
| Pride of Haarlem , large flower, dazzling cerise-scarlet | .47 | 2.75 | 22.00 |
| Prof. Francis Darwin , salmon scarlet | .70 | 4.00 | 32.00 |
| Psyche , delicate pink, very beautiful | .85 | 5.00 | 40.00 |
| Queen of the Roses , rose; extra | .47 | 2.75 | 22.00 |
| Rev. Ewbank , vivid heliotrope lilac, light bordered | .72 | 4.25 | 34.00 |

| | Doz. | 100. | 1000. |
|---|------|------|-------|
| Seylla , fiery scarlet | .47 | 2.75 | 22.00 |
| Sieraad van Flora , large flower, vivid rosy red; one of the earliest | .85 | 5.00 | 40.00 |
| Stanley , fiery scarlet | .70 | 4.00 | 32.00 |
| Sunrise , yellowish-bronze, peculiar color | .72 | 4.25 | 34.00 |
| Therese Schwartz , soft heliotrope lilac ... | .95 | 5.50 | 44.00 |
| The Sultan , black (may be called the black tulip) | .35 | 2.00 | 16.00 |
| William Copland , lilac, early | .80 | 4.75 | 38.00 |
| Wedding Veil , nearly pure white | .50 | 3.00 | 24.00 |
| William Pitt , scarlet red, excellent forcer... .. | .67 | 3.75 | 30.00 |
| Yellow Perfection , light bronze yellow, edged golden, extremely beautiful | 1.25 | 7.00 | 56.00 |
| Zephir , pretty soft rose | .72 | 4.25 | 34.00 |
| Zulu , violet-black, very distinct shape; a splendid and very remarkable flower .. | 1.25 | 7.00 | 56.00 |

From U. S. Department of Agriculture, Bureau of Plant Industry, Washington, D. C.

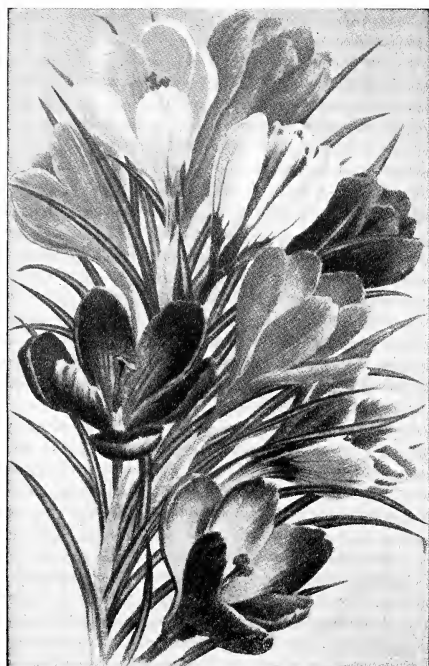
"I have to-day passed vouched in your favor for The bulbs furnished by your firm to this Department last fall were entirely satisfactory, as shown by the results secured on the Department's trial grounds this spring. You will receive check from our Disbursing Office in due course." R. A. O., Acting Assistant in Charge, 5-17-13.

From Germantown, Pa.—"A fine display this spring."

"The lot of Bulbs I bought from you made a fine display this spring. I will call on you in the fall." G. H. L., 5-12-15.

Dutch Bulbs add 3 months' bloom to your gardens.

CROCUS. Named Varieties



Our Crocus prices are not the lowest, but for the quality of stock we furnish they are very moderate, and we question if such quality can be had except direct from growers like W. & K.

You will have a pleasing surprise the first spring day next year if you scatter Crocuses liberally across your lawn, and in colonies along the front of your flower beds now. Don't confine yourself to the yellow sorts alone—remember that a touch of blue color in early spring is most welcome; that the white, purple and striped and spotted sorts offer an excellent forecast of your garden season of pleasure.

Plant Crocus on the lawn, 2 inches deep, and 3 inches apart in colonies, blending away to intervals of six inches, if you want an old and pleasing effect. Remember it does them no harm to be cut down, when the lawn needs its first application of the mower.

| | | | |
|---|--------|--------|---------|
| | Doz. | 100. | 1000. |
| Albion, purple | \$0.28 | \$1.50 | \$12.00 |
| Albion, striped | .22 | 1.15 | 9.20 |
| Baron von Brunow, dark blue | .28 | 1.50 | 12.00 |
| Caroline Chisholm, white | .23 | 1.25 | 10.00 |
| Dandy, purplish bordered white | .28 | 1.50 | 12.00 |
| David Rizzio, purple | .28 | 1.50 | 12.00 |
| Grande Vedette, blue | .28 | 1.50 | 12.00 |
| King of the Whites, white | .23 | 1.25 | 10.00 |
| La Majestueuse, striped | .22 | 1.15 | 9.20 |
| Madame Mina, violet striped | .22 | 1.15 | 9.20 |
| Mont-Blanc, white | .23 | 1.25 | 10.00 |
| Non plus ultra, blue, bordered white | .28 | 1.50 | 12.00 |
| Othello, dark purplish black | .28 | 1.50 | 12.00 |
| Purpurea grandiflora, dark purple | .40 | 2.25 | 18.00 |
| Queen Victoria, white | .23 | 1.25 | 10.00 |
| Sir John Franklin, blue, large | .28 | 1.50 | 12.00 |
| Sir Walter Scott, striped | .22 | 1.15 | 9.20 |
| | Doz. | 100. | |
| Mixed white | .18 | 1.00 | 8.00 |
| Mixed blue & purple | .24 | 1.30 | 10.40 |
| Mixed striped | .18 | 1.00 | 8.00 |
| Mixed extra giant flowering, all colors | .18 | 1.00 | 8.00 |

YELLOW CROCUS.

| | | | |
|----------------|-----|------|-------|
| Top size | .24 | 1.30 | 10.40 |
| 1st size | .22 | 1.15 | 9.20 |
| 2d size | .17 | .95 | 7.60 |
| 3d size | .15 | .75 | 6.00 |

NARCISSUS POETAZ

Originated from a cross of Narcissus Poeticus and the Polyanthus Narcissi.

This new strain may be considered to be an improved race of the old Polyanthus Narcissi. They are perfectly hardy, have many-flowered stems and larger sweet-scented flowers, and fit for pot culture as well as for forcing.

| | | |
|---|--------|---------|
| | Doz. | 100. |
| Alsace, white, cup lemon yellow, bordered orange. | \$1.50 | \$10.00 |

| | | |
|--|--------|--------|
| | Doz. | 100. |
| Aspasia, white, cup deep yellow | \$0.65 | \$3.50 |
| Elvira, white with yellow cup | .70 | 3.75 |
| Ideal, white with orange cup | 1.50 | 8.00 |
| Irene, yellow with orange cup | 1.40 | 7.50 |
| Klondyke, yellow all over | 2.75 | 15.00 |
| Profusion, white with orange cup | 1.75 | 10.00 |
| Triumph, white with yellow cup | 1.30 | 7.00 |

NARCISSI (DAFFODILS).

The Narcissus vies closely with the Tulip and Hyacinth for spring honors. Dainty in color, graceful in habit, it furnishes long-stemmed flowers which are highly desirable for cutting.

The poeticus varieties are very sweet-scented and like all the Narcissi, are especially well adapted for naturalizing in the semi-shady spots where the sun rays are slightly broken.

It is well to be remembered that Tulips and Hyacinths need more sun and lighter soil than the Narcissus, and to arrange

your planting accordingly if you want flowers that excel all in the neighborhood.

In planting do not break off the small bulbs which adhere to the sides of the Narcissus bulb—as these will send up blooms and provide for growth of a small clump from each bulb. Strangely, the American habit seems to be to separate the small attached bulb from the parent, losing its vitality largely and preventing the increasing clump, which Narcissi form.

From Attica, N. Y.—"I want more—send catalog."

"My Tulips I received last fall from Holland are just beautiful. They are all in full bloom. I want more, so kindly send me your new catalog of Bulbs." G. M. R., 5-17-15.

From Lancaster, Pa.—"Florist never had finer bulbs."

"The Bulbs received and I must say that I am pleased with them. If they give blooms to the size of Bulbs I will have fine stock for Easter. I never had finer Bulbs." J. F. J., 10-19-14.

"True to name and color."



SINGLE NARCISSI.

This grouping shows three of the best single Narcissi. The bud in the lower left-hand corner is the bicolor Grandis. From the illustration you get only a feeble idea of the beautiful contrast between the white perianth and the projecting yellow trumpet. The cut of the same variety in the centre of the illustration indicates the striking contrast between the bright yellow trumpet and the surrounding white perianth when fully opened.

In the upper left-hand corner and lower right are shown two views of the Golden Spur Narcissus which is of a deep yellow color. This is the best of all yellow Daffodils. Blooms early outdoors and forces easily.

In the upper right-hand corner is shown the beautiful Poeticus Ornatus (listed under Poeticus varieties above). Exceptional for forcing, fully three weeks before the ordinary Poeticus (or Pheasant's Eye) is in bloom. Ornatus produces beautiful white blooms with the distinctive yellow "eye" edged with red.

SINGLE NARCISSI.

| | | | |
|---------------|--------|--------|---------|
| | Doz. | 100. | 1000. |
| Mixture | \$0.25 | \$1.40 | \$11.20 |

RED CUPPED NARCISSUS.

(Complete list on page 18.)

INCOMPARABILIS VARIETIES.

| | | | | |
|------------------------------------|--|-----------|--------|--------|
| Incomparabilis Barri | Conspicuous, sulphur | .. \$0.20 | \$1.10 | \$8.80 |
| " | Cynosure, yellowish | .. .20 | 1.10 | 8.80 |
| " | Sir Watkin, yellow cup, sulphur perianth | .. .42 | 2.50 | 20.00 |
| " | Albus Stella, white | .. .18 | 1.00 | 8.00 |
| " | Typus, yellow | | | |
| Leedsii Elegans, white and sulphur | | .20 | 1.10 | 8.80 |

POETICUS VARIETIES.
(Poet's Narcissus.)

| | | | | |
|---|-------|--------|--------|--------|
| | Doz. | 100. | 1000. | |
| Biflorus, white, yellow cup | | \$0.20 | \$1.10 | \$8.00 |
| Poeticus, white, orange cup | | .18 | 1.00 | 8.00 |
| " Burbidgei, early | | .18 | 1.00 | 8.00 |
| " King Edward VII, very early, orange cup | | .67 | 3.75 | 30.00 |
| Ornatus, very early | | .15 | .75 | 6.00 |
| " double crowns | | .22 | 1.15 | 9.20 |
| " Poetarum, very early | | .25 | 1.35 | 10.80 |

TRUMPET VARIETIES.

| | | | | |
|--|--------|------|-------|-------------|
| Ard Righ (Irish King), very early; extra | .. .45 | 2.75 | 22.00 | |
| Bicolor grandis, yellow trumpet, white perianth | | .30 | 1.75 | 14.00 |
| " Empress, white and yellow, large | | .45 | 2.75 | 22.00 |
| " Horsfield, white and yellow | | .35 | 2.00 | 16.00 |
| " Victoria, grand | | .70 | 4.00 | 32.00 |
| " Emperor, yellow, large flower | | .50 | 3.00 | 24.00 |
| Golden Spur, golden yellow selected double crowns | | .70 | 4.00 | 32.00 |
| " first size | | .40 | 2.25 | 18.00 |
| Glory of Leiden, deep golden-yellow, very big and fine formed trumpet | | 1.60 | 11.00 | \$5.00 |
| Henry Irving, fine yellow, early | | .42 | 2.50 | 20.00 |
| King Alfred, a most desirable early Daffodil of an uniform rich golden-yellow; very large, refined flower and most vigorous grower | | | | Each \$0.65 |
| Madame de Graaff | | 1.80 | 12.00 | |
| Moschatus (Albicans), sulphury-white | | .40 | 2.25 | 18.00 |
| Obvallaris, yellow, very early | | .47 | 2.75 | 22.00 |
| Pseudo (Lent Lily), perianth sulphur, trumpet orange-yellow | | .40 | 2.25 | 18.00 |
| Scoticus, perianth white, trumpet yellow | | .50 | 3.00 | 24.00 |
| Trumpet Major, yellow, fine trumpet | | .40 | 2.25 | 18.00 |
| " Maximus, large golden-yellow | | .42 | 2.50 | 20.00 |
| " Nana, yellow, dwarf | | .25 | 1.35 | 10.80 |
| " Princeps, pale yellow | | .28 | 1.50 | 12.00 |
| Van Sion, golden yellow, very early for forcing | | .35 | 2.00 | 16.00 |

DOUBLE NARCISSI.

Among the double Narcissi none is so well-known as the double Von Sion, of which a side view is shown at left and a front view in the lower centre of this picture. This is the double yellow daffodil so popular in America around the Easter season, and for this purpose it is forced by florists in larger quantities than any other Narcissus.

The orange Phoenix shown at the top of this illustration shades from white to deep orange with a blending of yellow between; the Sulphur Phoenix shown at the right, from white to sulphur yellow. Of these two, the Orange Phoenix is generally considered the more satisfactory for forcing—but in common with all other double Narcissus, any of these varieties are easily grown outdoors.

| | | | | |
|---|--------|--------|---------|-------------|
| Mixture | Doz. | 100. | 1000. | |
| | \$0.25 | \$1.35 | \$12.00 | |
| Albo pleno odorato, white. The gardenia flower | | .18 | 1.00 | 8.00 |
| Capax Plenus, "Queen Ann's double Daffodil," star-shaped, lemon | | | | Each \$0.50 |
| Incomparable, Butter and Eggs | | .28 | 1.55 | 12.40 |
| Orange Phoenix, yellow and orange | | .30 | 1.75 | 14.00 |
| Pallidus plenus, sulphur and orange | | .42 | 2.50 | 20.00 |
| Pumilus plenus, rich yellow, very double | | .55 | 3.25 | 26.00 |
| Sulphur Phoenix, sulphury white | | .35 | 2.00 | 16.00 |
| Van Sion, double yellow trumpet, extra selected bulbs | | .80 | 4.75 | 42.00 |
| Van Sion, double yellow trumpet, first size | | .42 | 2.50 | 20.00 |
| Van Sion, double yellow trumpet, second size | | .30 | 1.75 | 14.00 |

From Americus, Ga.—"Have already referred others to you."

"The bulbs I bought from you in the fall were beautiful, and I certainly want to order more this year. Please mail me your new catalog of Narcissus, Daffodils and Hyacinths as soon as it is out. I have already referred your house to several admirers of your bulbs." Mrs. D. R. A., 4-20-15.

Packed in Holland—bloom well everywhere.

DOUBLE NARCISSI.



POLYANTHUS NARCISSI.
Bunch Flowered Narcissus.

| | Doz. | 100. | 1000. |
|--|--------|--------|---------|
| Bathurst, yellow | \$0.75 | \$4.50 | \$36.00 |
| Eazelman Major, white | 1.10 | 6.50 | 39.00 |
| Gloriosa, white | .60 | 3.50 | 28.00 |
| Grand Monarque, white | .50 | 3.00 | 24.00 |
| Grand Primo, sulphur | .50 | 3.00 | 24.00 |
| Grand Soleil d'or, golden-yellow | .60 | 3.50 | 38.00 |
| Her Majesty, white with yellow cup | .70 | 4.00 | 32.00 |
| Jaune Supreme, yellow | .70 | 4.00 | 32.00 |
| Newton, bright yellow | .85 | 5.00 | 40.00 |
| Queen of the Netherlands, white, early | .70 | 4.00 | 32.00 |
| White Pearl, white | .70 | 4.00 | 32.00 |
| Mixed, all colors | .50 | 3.00 | 24.00 |
| Mixed, white | .50 | 3.00 | 24.00 |
| Mixed, yellow | .50 | 3.00 | 24.00 |

RED CUPPED NARCISSUS.

| | Each. | Doz. |
|---|--------|--------|
| Barri-Delight, pure white, flat, orange-yellow broadly scarlet edged cup | \$0.85 | \$6.00 |
| Barri-Seagull, pure white, cup candy, edged apricot, very fine | .08 | .75 |
| Barri-Valeria, very late, large greenish-yellow eye, with distinct rim of red, perianth white | .85 | 9.00 |
| Incomparabilis-Flambeau, glowing orange cup | .60 | 6.00 |
| Incomparabilis-Red Crown, white, cup red-orange | .20 | 2.00 |
| Incomparabilis-Torch, striking variety, petals yellow, orange-scarlet cup | .90 | 10.00 |
| Incomparabilis-Will Scarlet, large fiery orange-red cup | .75 | 7.50 |

From Montgomery, Ala.—"Never saw such fine stock before."

"My order of bulbs was received several days ago, and I must say that I have never seen such fine stock in all of my flower experience. They have just made me 'flower crazy' going around showing my friends what fine specimens they are. Now accept my most hearty thanks for sending such select stock." J. P. M., 11-27-11.

From Canandaigua, N. Y.—"The finest blooms I have ever seen."

"I wish to say that the bulbs I got from you last fall were entirely satisfactory and produced the finest blooms I have ever had—better than from hyacinths I have paid twenty-five cents each for." G. W., 2-25-13.

Our manager a practical bulb man from Holland.

JONQUILS.

| | Doz. | 100. | 1000. |
|---|--------|--------|---------|
| Double, odoriferous | \$0.42 | \$2.50 | \$20.00 |
| Single, odoriferous | .20 | 1.10 | 8.80 |
| Single Campanelli, large | .22 | 1.15 | 9.20 |
| Single Odorus Rugulosus (Improved Campanelli) | .15 | .75 | 6.00 |

DOUBLE ANEMONES.

| | Doz. | 100. |
|---------------------------|--------|--------|
| In 6 fine named Varieties | \$0.30 | \$1.80 |
| Ceres, rosy white | .30 | 1.80 |
| Feu Superbe, scarlet | .40 | 2.25 |
| King of the Blues, blue | .30 | 1.80 |
| Rosette, soft rose | .30 | 1.80 |
| Sir Joseph Paxton, violet | .40 | 2.25 |
| Sir Robert Peel, lilac | .40 | 2.25 |
| Surprise, scarlet, extra | .40 | 2.25 |
| The Bride, pure white | .40 | 2.25 |
| All Colors Mixed | .25 | 1.60 |
| Scarlet, Mixed | .25 | 1.60 |
| Blue, Mixed | .25 | 1.60 |

SINGLE ANEMONES.

| | | |
|-----------------------|--------|--------|
| All colors, mixed | \$0.20 | \$1.20 |
| Scarlet, mixed | .20 | 1.20 |
| Blue, mixed | .20 | 1.20 |
| Violet, mixed | .20 | 1.20 |
| The Bride, pure white | .25 | 1.20 |

ANEMONES DE CAEN.

| | | |
|-------------------|--------|--------|
| All colors, mixed | \$0.25 | \$1.50 |
|-------------------|--------|--------|

ANEMONES ST. BRIGID.

If you will try this wonderful new race of half double anemones, particularly in a cool, shaded spot around the shrubs and bushes, you will find a pleasing surprise in wonderful scarlet, purple and cerise flowers, of a type that is still rare in America.

| | Doz. | 100. |
|------------------|--------|--------|
| Splendid mixture | \$0.45 | \$2.50 |

RANUNCULUS.

The Ranunculus Grandiflora is a brilliant feature of the fine gardens on the continent, but is comparatively little known, at its best, in America. In the opinion of American experts who have studied the conditions under which they flourish abroad, it should be easy to grow them in California and the entire Southwest, where the rainy season most closely duplicates those of their native Asia Minor. In other sections, growing Ranunculus outdoors requires care and skill—is a worth while test of expert gardening ability.

As a forcing flower Ranunculus has been standard for a half-century, there is no reason why any one should have trouble in getting a profusion of blooms with Ranunculus in his greenhouse.

| | Doz. | 100. |
|------------------------------------|--------|--------|
| Persian, in 6 fine named varieties | \$0.20 | \$1.20 |
| Persian, all colors mixed | .15 | .80 |
| French, in 6 fine named varieties | .20 | 1.20 |
| French, all colors mixed | .15 | .80 |
| Turban, in 6 named varieties | .25 | 1.40 |
| Turban, all colors mixed | .20 | 1.20 |

IRIS

In few flowers is there more world-wide interest than in the Iris. The German Iris, or Flag, was the first to interest any large number of American flower lovers, but the more graceful Japanese types have been introduced into most American gardens long before this.

Admittedly the Ideal Iris is Iris Hispanica, or Iris Anglica, the growing of which has been confined largely to American florists due to the feeling that the plant was difficult to raise.

True, the Spanish Iris requires more winter protection than the sturdy German types, but it is worth the effort, if you will plant in September and give it a rich, moist soil and good winter protection, you will find that the orchidlike blooms secured in May will well reward you.

IRIS ANGLICA.

| | | |
|-------------------------------------|--------|--------|
| In 3 named varieties | Doz. | 100. |
| Superfine Mixture | \$0.75 | \$4.50 |
| Bleu Mourant, blue | .50 | 3.00 |
| Mont Blanc, pure white, extra | .60 | 3.50 |
| Othello, dark blue | .45 | 2.50 |
| | .85 | 5.00 |

THE IRIS HISPANICA.

If planted around the end of September and given good winter protection, produces orchidlike flowers of remarkable beauty.



IRIS HISPANICA.

| | | |
|--------------------------------------|----------|--------|
| In 6 named varieties | } \$0.20 | \$1.10 |
| Alex von Humboldt, indigo blue | | |
| Belle Chinoise, deep yellow | | |
| | | |

| | | |
|--|----------|--------|
| British Queen, pure white | } Doz. | 100. |
| Chrysolora, pale yellow | | |
| Darling, dark blue | | |
| Leander, deep yellow | | |
| Louise, pearl color | | |
| Marie, blue | | |
| Reconnaissance, dark violet-bronze | } \$0.20 | \$1.10 |
| Mixed | | |

TUBEROUS BEGONIAS.

All Begonias are splendid potplants and are unsurpassed for growing outdoors.

SINGLE BEGONIAS.

| | | |
|---------------|--------|--------|
| Scarlet | Doz. | 100. |
| Rose | \$0.50 | \$3.00 |
| Orange | .50 | 3.00 |
| White | .50 | 3.00 |
| Yellow | .50 | 3.00 |
| Copper | .50 | 3.00 |

DOUBLE BEGONIAS.

| | | |
|--------------|--------|--------|
| Orange | \$0.70 | \$4.00 |
| White | .70 | 4.00 |
| Yellow | .70 | 4.00 |
| Copper | .70 | 4.00 |

BEGONIA CRISPA.

New "Frisled" Begonia.

| | | |
|--|--------|--------|
| The petals of this Begonia are fimbriated and wonderfully fringed. | Doz. | 100. |
| All colors mixed | \$1.00 | \$6.00 |

BEGONIA CRISTATA

New bearded Begonias

Produce large flowers of great substance and size and each petal is ornated with a conspicuous crest on the centre.

| | | |
|------------------------|--------|--------|
| | Doz. | 100. |
| All colors mixed | \$1.00 | \$6.00 |

CONVALLARIA or LILY OF THE VALLEY.

Directions for forcing Lily of the Valley in your house.

The Berlin crowns are the best for early forcing. Dutch crowns are for late forcing. Both will do nicely outdoors as well—in that case plant in spring.

They can be easily forced in pots. Put about two inches of soil in a pot, put the bunch in, cut the string which keeps the crowns tied and fill up with soil in such a way that the crowns show slightly.

Keep them in a heated room, water daily and cover them with another flower pot so as to make the crowns start growing. After three or four weeks take the top pot away, give the crowns the full light and they will flower nicely after a month or so.

Give the Dutch crowns the same treatment, only force them slowly, do not give them as much heat as the Berlin crowns.

| | | |
|--|--------|--------|
| Plant the Berlin and Dutch Lily of the Valley as soon as you get them. | Doz. | 100. |
| Convallaria Berlin crowns | \$0.50 | \$3.00 |
| Convallaria Dutch crowns | .40 | 2.25 |

From Philadelphia, Pa.—

"Specimens of your Tulips were received—many thanks. The Tulips we purchased from you were the finest we have ever had and were much admired by all who saw them. Kindly send me a catalogue of the different flowers you carry; also price list." F. W. K., 5-13-15.

From Swarthmore, Pa.—"Trust next order will equal last for quality."

"We are very well satisfied with the Bulbs we purchased from you last season, and we trust that the order we have given to your salesman for next season will be of same good quality." S. & L., 4-29-13.

Five successful seasons in America.

GLADIOLUS

Though the Gladiolus likes the sun and prefers good depth of light soil, well drained, it can readily be grown with success under any ordinary conditions.

Plant about four inches apart and five inches deep, for an average size bulb.

As they bloom from June on, they can be used to good advantage in rose or pæony beds; particularly if you arrange for a succession of bloom by starting early in May and planting each couple of weeks until the end of June. In this case you will have a beautiful mass of bloom until nearly October—but a short time before the yellowing of the foliage warns you that it is time to take up the bulbs and store them in the cellar, till next spring.

| | Doz. | 100. | 1000. |
|--|--------|--------|---------|
| America, bright pink, large flower | \$0.40 | \$2.25 | \$17.00 |
| Brenchleyensis, scarlet, extra bulbs | .47 | 2.75 | 20.00 |
| " 1st size bulbs | .35 | 2.00 | 15.00 |
| Byzantinus, purple, early | .22 | 1.20 | 10.00 |
| Colvilli alba (The Bride), white | .22 | 1.20 | |
| " rubra, red | .23 | 1.25 | |
| " rosea, pink | .23 | 1.25 | |
| Childs, mixed | .35 | 2.00 | |
| " good varieties named | 1.00 | 6.00 | |
| Gandavensis Type, red and yellow | .35 | 2.00 | 15.00 |
| " mixed, all colors | .35 | 2.00 | 15.00 |
| " named varieties | .70 | 4.00 | 30.00 |
| Gelria, dark blue | 1.00 | 6.00 | |
| " heliotrope | 1.00 | 6.00 | |
| " purple | 1.00 | 6.00 | |
| " bright rose | 1.00 | 6.00 | |
| " pink | 1.00 | 6.00 | |
| " violet | 1.00 | 6.00 | |
| " yellow | 1.40 | 8.00 | |
| " all colors mixed | .70 | 4.00 | 30.00 |
| Groff's Hybrids, extra | .70 | 4.00 | 30.00 |
| Hollandia, orange-yellow, large, new | .50 | 3.00 | 22.00 |
| Lemoine, named varieties | 1.00 | 6.00 | 48.00 |
| " Bar. Jos. Hulot, deep violet blue | .70 | 4.00 | 30.00 |
| " Marie Lemoine, creamy-white with salmon-pink | .50 | 3.00 | 24.00 |
| " superfine mixed | .35 | 2.00 | 15.00 |
| Nanus Ackermannii, orange-red | .28 | 1.50 | |
| " Delicatissima (Blushing Bride), bright pink | .22 | 1.20 | |
| " Fairy Queen, carmine red | .22 | 1.20 | |
| " Peach Blossom, soft rose | .35 | 2.00 | |
| " mixed, all colors | .18 | 1.00 | |
| Nanceianus, in named varieties | 1.75 | 10.50 | |
| " superfine mixed | .70 | 4.00 | |
| Prineeps, American novelty, large Amaryllis like flower, brilliant deep scarlet, with yellowish-white blotch | .75 | 4.50 | 35.00 |

| | | |
|--|-----|------|
| Ramosus, Formosissimus, scarlet, white striped | .50 | 3.00 |
| " Non plus Ultra, bright scarlet, | | |
| " superfine mixture | .35 | 2.00 |

NEWER AND NEWEST VARIETIES.

| | Doz. | 100. | 1000. |
|--|--------|--------|---------|
| Augusta, white, lavender anthers | \$0.65 | \$3.60 | \$28.00 |
| Bedenia, true lavender, not too blue, big well expanded flowers, a real beauty, Each, 75 cts. | 8.00 | | |
| Electra, brilliant vermilion with small white blotch | 5.00 | 30.00 | |
| Europa, large snowy-white flowers on vigorous elegant stems | 3.00 | 18.00 | |
| Francis King, scarlet | .75 | 4.50 | 35.00 |
| Glory of Noordwijk, sulphur-yellow | Each | \$3.00 | |
| Halley, brilliant orange-red, yellow blotch in throat | .65 | 3.60 | 28.00 |
| Lily Lehmann, very delicate rose, passing to white, large flowering variety. Excceedingly charming | 1.50 | 9.00 | |
| Liebesfeuer, fiery red orange shaded, lower petals are striped violet-brown. Ea., \$1.25 | 14.00 | | |
| Niagara, light yellow, deeper yellow in throat. Large open flowers on strong spikes | 1.00 | 6.00 | |
| Panama, finest pink, flowers are large and wide open and the color of glowing mauve rose is certainly unique | 2.00 | 12.00 | |
| Pink Beauty, pink with small dark blotch. The earliest Gladiolus | .65 | 3.60 | 28.00 |
| Pink Perfection, light apple-blossom, the lower petals are reflexed lilac. Ea., 35 | 3.75 | 21.00 | |
| Princepine, brilliant red | 1.40 | 8.00 | |
| Willy Wigman, creamy-white, with crimson blotches on lower petals | 1.00 | 6.00 | |

SPIRAEAS

| | |
|--|----------------------------------|
| SPIRAEA PHILADELPHIA is a marvel in lavender-pink, and a perfect grower. | Each \$0.30; Dozen, \$3.00. |
| AMERICA. A striking novelty: for the first time introduced to the market. A cross between Astilbe hybr. Peach Blossom and Astilbe Arendsi, combining all the good capacities of both. The foliage of rich green color is like the old Spiraea Japonica. Elegant flowers of Catleya-color ; nice lilac rose with silvery reflex , hereto unknown in forcing Spiraea. Forces at the same time as Queen Alexandra. | Each, \$0.75; Per dozen, \$7.00. |
| AVALANCHE. Award of merit Royal Horticultural Society, London (Votes, unanimous). A good pure white variety obtained as the result of a cross between Spiraea compacta multiflora and Astilbe chinensis. The flowers have the same feathered habit that has made the pink forms so popular. | Each, \$0.30; Per dozen, \$3.00. |
| QUEEN ALEXANDRA (IMPROVED). A deep pink flower. Has all the good capacities of the common Queen Alexandra; the color is, however, more constant and a better pink. | Each, \$0.40; Per dozen, \$4.00. |
| RUBENS. Deep pink, forces as early and as easily as Gladstone. | Each, \$0.75; Per dozen, \$7.00. |
| QUEEN ALEXANDRA, the newest pink, has created much sensation among all growers; it combines together with its deep rosy pink the perfect growing and easy forcing of the Spiraea Gladstone. | Each, \$0.20; Per dozen, \$2.00 |
| GLADSTONE. The growers of the continent were not surprised when, as the result of our long experience as Spiraea specialists, it was possible to offer a new white Spiraea, which was a perfect grower of extra free flowering habit and which forced easily. This white—the Gladstone Spiraea—is standard for highest class use in Europe, and has been bought by many of the best florists in America, all of whom express their highest satisfaction. | Each, \$0.20; Per dozen, \$2.00. |

| | Each. | Dozen. | | Each. | Dozen. |
|---------------------------|--------|--------|-----------------------------|--------|--------|
| Peach Blossom, clear pink | \$0.20 | \$2.00 | Japonica | \$0.20 | \$2.00 |
| Astilboides | .20 | 2.00 | Palmeta alba, white flowers | .20 | 2.00 |
| " floribunda | .20 | 2.00 | " elegans | .20 | 2.00 |
| Blondine | .20 | 2.00 | " rubra | .20 | 2.00 |
| Compacta multiflora | .20 | 2.00 | Washington | .20 | 2.00 |

From Nelsonville, N. J.—"1913 test order leads to 1914 entire order."

"Your letter answering questions about lifting Darwin Tulips received, for which I thank you very much. I am sending you my ENTIRE ORDER for Tulips, as those I bought from your firm last year were superior to those I bought elsewhere. Am also sending a small order for a friend." E. N. N., 6-24-14.

Latest advice from Holland—"Bulbs wonderfully firm."

IMPORTED BULBS

| | Doz. | 100. |
|--|--------|--------|
| Roman Hyacinths, the earliest white Hyacinth... | \$1.00 | \$6.00 |
| Narcissus Double Roman | .60 | 3.50 |
| " Paperwhite, the well-known sweet- | | |
| bunch-flowering Narcissus | .40 | 2.25 |
| Freesia refracta alba, fine truss of sweet-scented | | |
| flowers | .25 | 1.50 |
| Lilium Candidum, the Madonna Lily | 1.00 | 6.00 |

| | Doz. | 100. |
|----------------|--------|--------|
| Top size Bulbs | \$0.40 | \$4.00 |
| First size | .30 | 3.00 |
| Second size | .20 | 2.00 |

TUBEROSES THE PEARL.

These Tuberoses are imported by us from one of the best growers, and we can therefore guarantee these bulbs to be the very best obtainable. We send the Tuberoses from the Beginning of March until half of April. We should recommend our customers to take a trial with these Bulbs which produce pure white flowers with a very nice odor.

Per dozen, \$0.50; per hundred, \$3.00.

LILIUM AURATUM GOLD-BANDED LILY.

A beautiful Lily from Japan, the flowers are white, with crimson dots and a golden band through the centre of each petal. We send these Lilies beginning of March until April.

MISCELLANEOUS BULBS

We have cut down this list to only the most popular kinds of miscellaneous bulbs.

Being specialists in bulbs we do not like to make the impression on you that ours is a catalogue from which you can order just anything you find in any other ordinary price-list. What we offer we grow and supply to you direct from our own fields.

| | Doz. | 100. |
|---|--------|--------|
| Allium, azureum, heaven-blue | \$0.85 | \$5.00 |
| " Molly Luteum, yellow | .20 | 1.20 |
| " Neapolitanum | .20 | 1.20 |
| " Ostromsklanum, fine rose | .20 | 1.20 |
| Chionodoxa gigantea, Glory of the Snow, blue | .35 | 2.00 |
| " Lucillae, Glory of the Snow, blue with | | |
| white star | .30 | 1.75 |
| Chionodoxa Sardensis, Glory of the Snow; fine | | |
| blue | .25 | 1.50 |
| Eranthis Hyemalis, yellow, very early | .15 | .80 |
| Erythronium Americanum, yellow | 1.35 | 8.00 |
| " Denscanis, mixed | .25 | 1.50 |
| " " album, white | .25 | 1.50 |
| " " purpureum, purple | .35 | 2.00 |
| " " roseum, rose | .25 | 1.50 |
| Fritillaria Imperialis, red double | 8.25 | 50.00 |
| " " yellow double | 8.25 | 50.00 |
| " " gold striped (single) | 8.50 | 50.00 |
| " " yellow (single) | 2.50 | 15.00 |
| " " aurora, red (single) | 2.50 | 15.00 |
| " " crown upon crown (single) | 2.00 | 12.00 |
| " " red (single) | 1.30 | 8.00 |
| " " mixed | 1.00 | 6.00 |

| | Doz. | 100. |
|--|--------|--------|
| Fritillaria meleagris, mixed, spring flowering | \$0.20 | \$1.20 |
| Ixia, mixed | .15 | .80 |
| Muscari Botryoides, blue, grape Hyacinths | .15 | .80 |
| " " white, grape Hyacinths | .20 | 1.20 |
| " " Plumosus, violet feather Hyacinths | .20 | 1.20 |
| Oxalis Bowii | .35 | 2.00 |
| " Cernua, yellow | .20 | 1.20 |
| " Cernua, fl. pl., double yellow | .40 | 2.40 |
| " Deppel, scarlet | .20 | 1.20 |
| " Superfine Mixed | .20 | 1.20 |
| Scilla bifolia, blue | .20 | 1.20 |
| " " white | 2.50 | 15.00 |
| " " campanulata alba, white | .20 | 1.20 |
| " " " blue | .20 | 1.20 |
| " " sibirica, blue | .20 | 1.20 |
| " " white | .25 | 1.50 |

Snowdrops (*Galanthus Nivalis*). These little white heralds of the spring are simply lovely. The snow has hardly left your lawn and lo! they push up their tiny heads to ring in the time which inspires the whole flower-world with new life. And they don't require any special attention either. They just invite you to look at them and enjoy spring.

| | | |
|----------------------------------|--------|--------|
| Snowdrops, Single | \$0.20 | \$1.20 |
| " Double | .40 | 2.25 |
| " Elwesii (large single flowers) | .20 | 1.20 |
| Sparaxis, named varieties | .20 | 1.20 |
| " mixed | .15 | .75 |

From Covington, Tenn.—"Better results from ours second year, than from others first year."

"Two years ago I gave your firm an order and I want to say that nothing has ever been seen here like the results I got. Especially the Hyacinths and Tulips. My Liliums did not do so well, owing, I think, to weather conditions. Last year I mislaid your catalog and ordered from other florists with indifferent results. In fact, the bulbs from your firm did better the second year than the first year bulbs from other florists. Several parties have asked me about ordering from you and I think I can secure you several responsible customers at this place." S. S., 5-26-14.

"Wakru" means dependable varieties. We catalog no experiments.

Paeony-Flowered Dahlias

This is a new class of Dahlias of very large size. The flowers are borne on long, stout stems and are especially well fit for decoration.

The plants produce an effective display in the garden. The new varieties introduced by our firm are the very best, and many of them were awarded certificates and awards of merit. We send these roots in spring so that our customers can plant them in May and have no bother to keep the roots free of frost during winter.

| | Each. | | Each. |
|---|--------|---|-------|
| Andrew Carnegie, salmon pink. Award of merit..... | \$0.20 | Kaiserin Augusta Victoria, creamy-white | .30 |
| Bertha von Suttner, bluish rose, with salmon tint. Award of merit | .35 | King Edward, deep purple, unique shade | .45 |
| Cesar, canary yellow. 1st class certificate | .55 | King Leopold, canary yellow | .20 |
| Cecilia, creamy-white. 1st class certificate | .55 | H. J. Lovink, mauve shaded. 1st class certificate | .50 |
| Dr. W. K. v. Gorkum, white, rosy shaded | .20 | La Riante, soft shade of mauve-pink | .20 |
| Dr. Peary, dark mahogany, velvety shaded. Award of merit | .55 | Mannheim, soft orange-red. 1st class certificate | .20 |
| Duke Henry, rich brilliant deep crimson | .20 | Merveille, orange-yellow, marvellous form | .25 |
| Geisha, scarlet and gold, the most sensational dahlia of all. 1st class certificate | .55 | Miss Gladys Dawson, orange, shaded yellow | .20 |
| Germania, bright glowing crimson-scarlet | .20 | Montblanc, pure white | .60 |
| Glory of Baarn, soft pink. 1st class certificate | .20 | Paul Kruger, rosy, white striped | .20 |
| H. Hornsvedt, soft salmon, elegant form | .30 | P. W. Jansen, orange-yellow | .30 |
| Hortulanus Budde, bright orange-red. Award of merit .. | 1.00 | Queen Alexandra, sulphur-yellow. 1st class certificate .. | .35 |
| Hugo de Vries, bronzy-orange | .20 | Queen Emma, rosy-pink, suffused yellow | .20 |
| Isadora Duncan, pale salmon | .30 | Queen Wilhelmina, pure white | .20 |
| | | Sneeuwuitje, pure white | .20 |
| | | Sherloek Holmes, mauve, splendid form | 1.20 |
| | | Vesta, pale yellow, salmon rose shaded | .35 |

New Paeony-Flowered Dahlias

| | Each. | | Each. |
|---|--------|--|-------|
| America, apricot-orange. 1st class certificate | \$4.00 | Electra, bluish-mauve, grows very erect above the foliage, free flowering. 1st class certificate | 2.00 |
| Avalanche, pure white, the best white in this class. Award of merit | 3.00 | Loveliness, pale lilac, white shaded. Award of merit | 3.00 |
| Fraulein Budde, soft pink, free flowering. Award of merit, | 2.00 | Painted Lady, pale rose. Award of merit | 3.00 |

Paeony-Flowered Dahlias

New Novelties

| | Each. | | Each. |
|---|---------|---|---------|
| Chatenay, color similar to the well-known Chatenay rose, blooms held erect on good stiff stalk. First class certificate, Amsterdam, 1913 | \$10.00 | Mrs. J. C. Vaughan, lovely bright, yet clean yellow flowers, eight inches across, with incurved irregular florets of the Cactus type, very attractive, good stalk and substance. First class certificate. National Dahlia Society and Award of merit, R. H. S., London, Sept., 1913 | \$12.00 |
| Duchess of Brunswick, bright red, blooms eight to nine inches across, the outside of the florets being apricot. First class certificate National Dahlia Society and Award of merit, R. H. S., London, Sept., 1913 | 12.00 | | |

Paeony-Decorative Dahlias

| | Each. | | Each. |
|---|--------|---|--------|
| Alice Roosevelt, mauve shaded | \$0.40 | Mrs. Fleers, rosy-red. 1st class certificate | \$0.45 |
| Hortulanus Fiet, salmon, yellow centre, very large. 1st class certificate | 1.25 | Princess Juliana, pure white, free flowering, the best white for cutting. 1st class certificate | .45 |
| Hortulanus Witte, pure white. 1st class certificate | .45 | Zeppelin, mauve, perfect form. Award of merit | 1.25 |

New-Paeony Decorative Dahlias

| | Each. | | Each. |
|---|--------|--|--------|
| Berch van Heemstede, pure yellow, free flowering. 1st class certificate | \$3.00 | Leo XIII, deep yellow, remarkable form, very attractive. Award of merit, 1913. 1st class certificate, 1913 | \$3.50 |
| Great Britain, deep mauve, perfect form, very large flower. | | | |

From Salem, N. J.—"So healthy and fine—wants more."

"In response to our order of the 19th, the hundred Tulip Bulbs came in good condition. They seem so healthy and fine, and we find we will have space for one hundred more, so are enclosing stamps for one hundred more, asking that you send the same kind—Murillo (double) Tulips—as soon as possible." D. S. C., 10-23-14.

From Urbana, Ohio.—"Sure they will bloom well."

"I received the order of bulbs yesterday. They are fine, large bulbs—the best I have ever had. I thank you very much for the extra ones you added. I am sure there will be no failure in blooms in the spring." Miss L. E. T., 10-6-14.

Orders handled throughout by expert Hollanders.

Quantity wanted.

NAME OF BULBS.

Price

Names and addresses of Friends, who are interested in bulbs.

A LESSON IN BUYING

WHEN a friend of yours complains that something he bought is no good, you come back quickly with the remark, "Why didn't you buy the trade-marked article? You know that is good. Why take chances on something that the maker don't even put his name on?"

Which is truth. A trade-marked article **must** be good, or the trade name is its own undoing.

Trade marks and trade names make it easier to **remember** the article and its origin—the maker and seller of unworthy goods want you to forget.

If a man puts out three grades of goods, he applies his trade-mark to the best and puts his whole soul back of that line. He must maintain quality or go out of business.

There are many grades of Dutch Bulbs. Even at the finest nurseries in Holland the bulbs require sorting. On the best grade only—big mother bulbs, full of vitality—we put the **Wakru Girl** trade mark. For five years we have been selling bulbs in America with this trade mark and the volume of business has grown because no one who has planted **Wakru Bulbs** one year was satisfied to plant any other bulbs next year.

Experts grow these bulbs, experts sort out the best bulbs for the **Wakru packages**, experts pack them right at the bulb fields in Holland. You are surer that **Wakru Bulbs** are true to name and color, you are surer of a larger quantity of larger size flowers—if you get "**Wakru**" **Bulbs**. They come to your home right in the original packages into which they are put in Holland by our experts.



Why take chances on bulbs without a trade name—without a trade mark to identify them.

Give a test order for Wakru Bulbs—make comparisons with the best other bulbs you know of. We abide by your judgment. Next year when you see the larger blooms and more of them—you will determine to buy nothing but **Wakru Bulbs**.

GENERAL INDEX

| | PAGE |
|--|-------|
| Anemones | 18 |
| Begonias | 19 |
| Convallaria (Lily of the Valley) | 19 |
| Crocus | 16 |
| Daffodils | 16-18 |
| Dahlias | 22 |
| Gladiolus | 20 |
| Hyacinths | 4-7 |
| Imported Bulbs | 21 |
| Iris | 19 |
| Jonquils | 18 |
| Narcissi | 16-18 |
| Ranunculus | 18 |
| Spiraes | 20 |
| Tulips. Early | 9-12 |
| Darwin | 14-15 |
| May Flowering | 13-14 |
| Parrot or Dragon | 13 |
| Rembrandt | 13 |
| The Newest | 8 |
| Variegated Leaved | 13 |



“WAKRU QUALITY”
 Grown by the Largest Growers
 of High Quality Dutch
 Bulbs in Holland